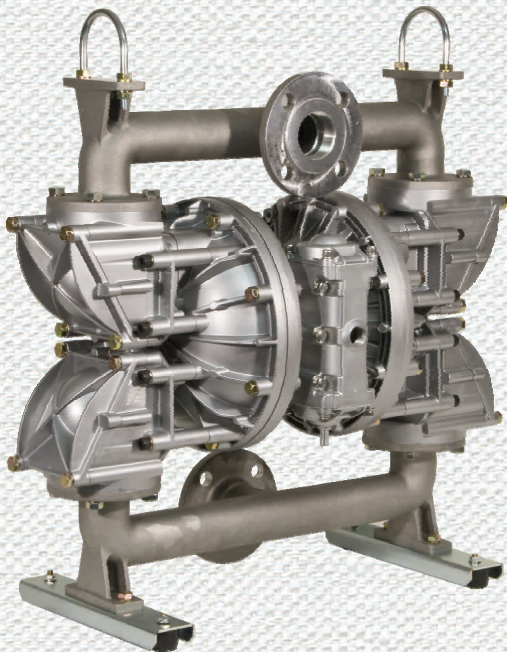
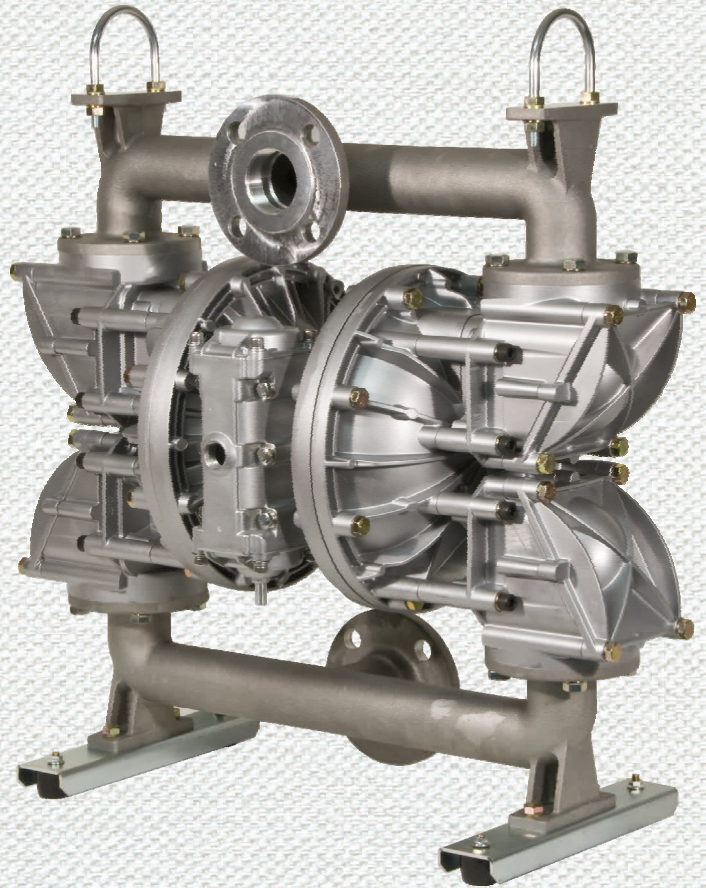


**Yamada** **SOLID**  
**PRO** Designed to  
Pump Fluids  
Containing Solids

The Yamada® SolidPRO® Pump is designed to pump fluids containing solids up to 2 inches (50mm) in diameter. Built on the foundation of the NDP-Series line of pumps, the SolidPRO® features Yamada's patented Stall-free/Lube-free Air Valve and rugged, easy-to-service bolted construction.

Designed for durability in the field, the SolidPRO® pump's innovative flap-type check valve technology provides streaming passage of solids while minimizing clogging and downtime. Four external bolts release valve covers on either side permitting service and maintenance without removing the pump from installation.



**Plus....** All the benefits of every Yamada Pump

- Non-lubricated Air-Valve
- Bolted Construction
- Short Stroke Technology – allowing for longer diaphragm life
- Outside-Accessible Air Valve
- Modular Pilot-Valve Design – no dynamic O-Rings to replace or repair

**Call (888) 450-3978**

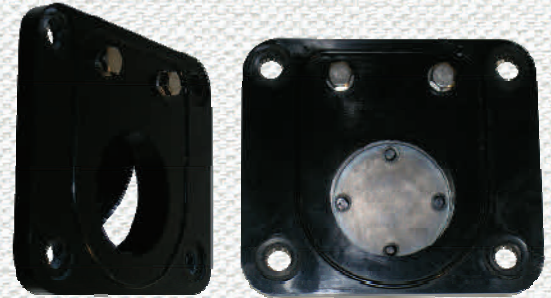


## Flapper Pump

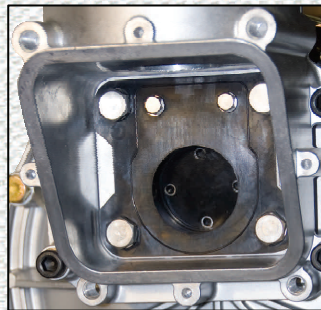
### Design Features

- Heavy-duty flap check valve permits passage of up to 2 inch solids
- Easy access to valve chambers for ease of maintenance
- In-line maintenance facilitates servicing pump without removal from installation
- Top suction / bottom-discharge design keeps solids from settling in pump
- Vented diaphragm chambers alleviate problems associated with trapped air/gas
- Non-lubricated air valve
- Outside-accessible air valve
- Bolted construction
- Short-stroke technology improves diaphragm life
- Modular pilot valve design requires no dynamic O-rings to replace or repair

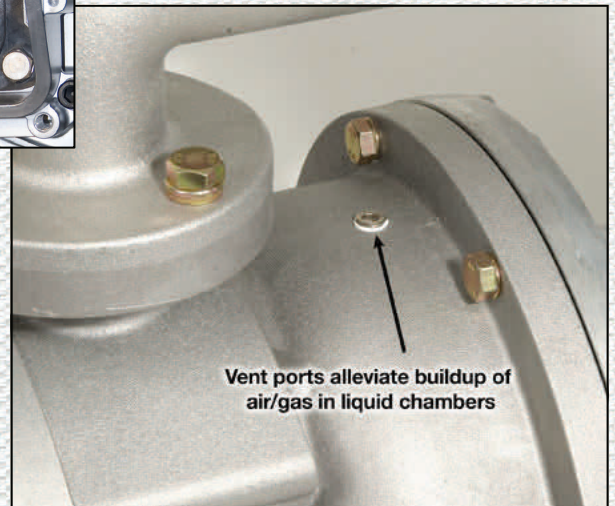
Call (888) 450-3978



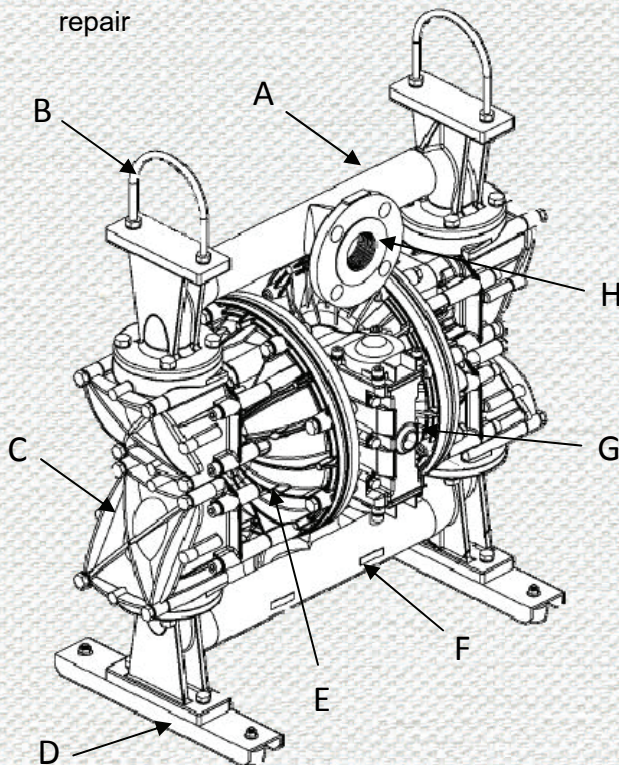
Heavy Duty Flap Check Valve



Just 4 bolts  
remove the  
side plate



Vent ports alleviate buildup of  
air/gas in liquid chambers



- A. Suction Manifold
- B. U-Bolts
- C. Check Valve Chambers w/access ports
- D. Removable/Replaceable Legs
- E. Liquid Chamber
- F. Discharge Manifold
- G. Non-Lube Air Motor
- H. 2" Multi-port (ANSI Flange & NPT)



# Flapper Pump

	Yamada NDP-50FA_	Leading Competitor
<b>Weight</b>	110 lbs	95 lbs
<b>Dimensions</b>	H 31" x W 25-1/2" x D 14-1/8"	H 20-5/6" x W 21-3/4" x D 13-5/8"
<b>Intake &amp; Discharge Ports</b>	2" Multi-port 150 # RF Flange & NPT	Only NPT offered
<b>Flow</b>	150 gpm max	140 gpm max
<b>Solids Size</b>	Up to 2" (50 mm)	Up to 2" (50 mm)
<b>Lift</b>	24 feet dry max	20 feet dry max
<b>Air Valve</b>		
<b>Lubrication</b>	No Lubrication Required	Lubrication Required
<b>Manual Override</b>	Yes	None
<b>Liquid Side</b>		
<b>In Place Clean Out Ports</b>	Yes - can do flapper/seal assembly maintenance without pump removal	None - must be removed from service
<b>Flapper Mating Surfaces</b>	Rubber / Rubber (no gaskets / o'rings)	Rubber / Metal (with gaskets)
<b>Flapper Seal</b>	Raised angled seat compensates for normal wear and faster seating of flap valve	Once worn, will not seal
<b>Flow Through Ports</b>	Angled for maximum flow through	90 degree turns lead to clogging
<b>Diaphragms</b>	Short stroke technology for longer diaphragm life	Over stressed diaphragms lead to accelerated failure

## Applications

Mine Dewatering  
Sumps  
Drillers Mud  
Powder  
Food Process Waste  
DAF Sludge  
Deactivated Sludge

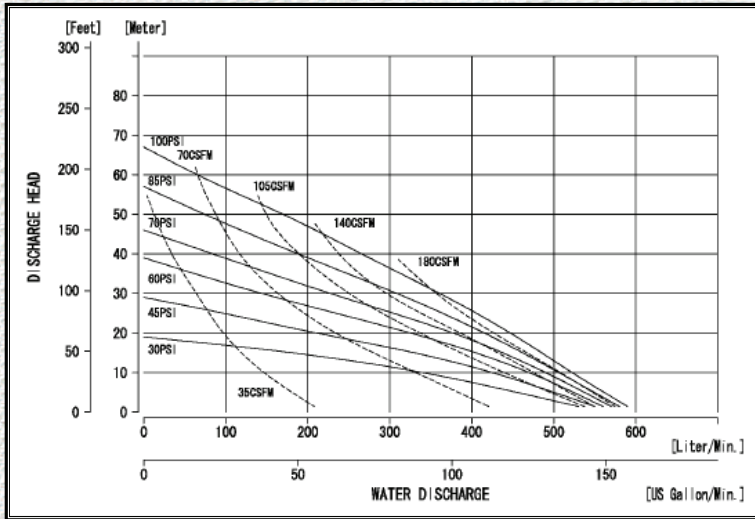
## Industries Served

Mining  
General Industrial  
Construction  
Refineries  
Oil & Gas  
Municipalities  
Food Processing

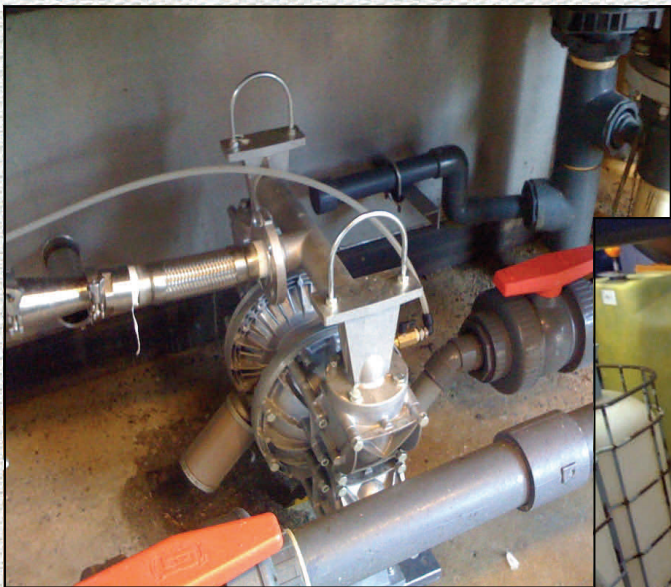
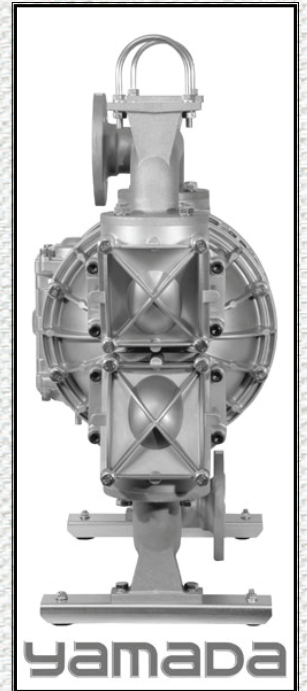
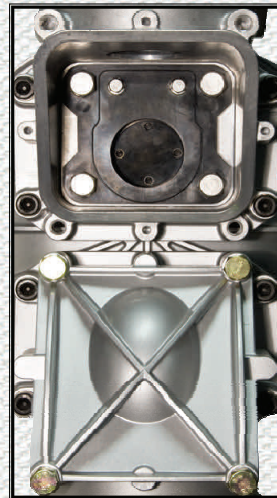


# Flapper Pump

*Experience the Flap-Performance!*



Clean in place design



Call (888) 450-3978

Label:

