

CR, CRN 95 to 255

50/60 Hz

Service instructions



Original service instructions

CONTENTS

	Page
1. General information	3
1.1 Hazard statements	3
1.2 Notes	3
1.3 Safety details to be aware of when working on the product	4
1.4 Contaminated products	4
1.5 Servicing the motor	4
2. Preparing the dismantling of the product	4
2.1 Lifting the product	4
3. Dismantling and assembling the product	4
3.1 Motor	4
3.2 Shaft seal, motor stool, pump head cover, sleeve and chamber stack	5
3.3 Thrust-handling device	8
4. Renewing thrust-handling device wear parts	9
4.1 Chamber stack	9
5. Renewing chamber wear parts	14
5.1 Neck ring (45)	14
5.2 Bush (47c) and retaining ring (47d)	15
6. Renewing shaft-seal wear parts	16
6.1 Dismantling	16
6.2 Assembly	16
7. Additional information	17
7.1 Torques	17
7.2 Lubricants	17
7.3 Special service tools	18
7.4 Order of assembly for chambers and impellers	20
7.5 Drawings	21



Read this document before starting service work on the product. Installation and service work must comply with local regulations and accepted codes of good practice.

Observe the safety instructions in the installation and operating instructions for the product.

1. General information

1.1 Hazard statements

The symbols and hazard statements below may appear in Grundfos installation and operating instructions, safety instructions and service instructions.

**DANGER**

Indicates a hazardous situation which, if not avoided, will result in death or serious personal injury.

**WARNING**

Indicates a hazardous situation which, if not avoided, could result in death or serious personal injury.

**CAUTION**

Indicates a hazardous situation which, if not avoided, could result in minor or moderate personal injury.

The hazard statements are structured in the following way:

**SIGNAL WORD****Description of hazard**

Consequence of ignoring the warning.
- Action to avoid the hazard.

1.2 Notes

The symbols and notes below may appear in Grundfos installation and operating instructions, safety instructions and service instructions.



Observe these instructions for explosion-proof products.



A blue or grey circle with a white graphical symbol indicates that an action must be taken.



A red or grey circle with a diagonal bar, possibly with a black graphical symbol, indicates that an action must not be taken or must be stopped.



If these instructions are not observed, it may result in malfunction or damage to the equipment.



Tips and advice that make the work easier.

1.3 Safety details to be aware of when working on the product



DANGER

Electric shock

Death or serious personal injury

- Before starting any work on the product, make sure that the power supply has been switched off and that it cannot be accidentally switched on.

WARNING

Falling objects

Death or serious personal injury

- Follow the lifting instructions.
- Use lifting equipment which is approved for the weight of the product.
- Persons must keep a safe distance to the product during lifting operations.
- Wear personal protective equipment.

For lifting instructions, see the instructions provided with the product.



WARNING

Falling objects

Death or serious personal injury

- Keep the product in a stable and fixed position when working on it.



WARNING

Corrosive liquids

Death or serious personal injury

- Wear personal protective equipment.



WARNING

Toxic liquids

Death or serious personal injury

- Wear personal protective equipment.



CAUTION

Hot or cold liquid

Minor or moderate personal injury

- Wear personal protective equipment.



CAUTION

Hot or cold surface

Minor or moderate personal injury

- Make sure that no one can accidentally come into contact with hot or cold surfaces.



We recommend that you repair pumps with motors of 7.5 kW and up at the pump site. Necessary lifting equipment must be available.

1.4 Contaminated products



CAUTION

Biological hazard

Minor or moderate personal injury

- Flush the pump thoroughly with water and rinse the pump parts in water after dismantling.

The product will be classified as contaminated if it has been used for a liquid which is injurious to health or toxic.

If you request Grundfos to service the product, contact Grundfos with details about the liquid before returning the product for service. Otherwise, Grundfos can refuse to accept the product for service.

Any application for service must include details about the liquid.

Clean the product in the best possible way before you return it.

Costs of returning the product are to be paid by the customer.

1.5 Servicing the motor

Grundfos MG and MGE motors

Service documentation is available in Grundfos Product Center > <http://product-selection.grundfos.com/>.

Motors of other makes

Contact the motor manufacturer.

2. Preparing the dismantling of the product

2.1 Lifting the product

Lifting procedures are described in the installation and operating instructions. Use the QR code or link below:



<http://net.grundfos.com/qr/i/99078486>

3. Dismantling and assembling the product

Parts are indicated by numbers and refer to the drawings in section 7.5 *Drawings*.

Tools are indicated by letters and refer to section 7.3 *Special service tools*.

3.1 Motor

3.1.1 Removal

1. Disconnect the power supply and remove the power cable.
2. Remove screws (7a) and coupling guards (7).
3. Remove screws (9) and coupling halves (10a). It may be necessary to gently loosen the coupling halves with a plastic hammer.
4. Remove cylindrical pin (10) from the pump shaft (51).
5. Attach approved lifting equipment to the motor in order to prevent it from falling before proceeding with any further dismantling. For correct attachment of lifting equipment, see instructions supplied with the pump.
6. Remove the screws (28a), washers (32a) and nuts (36a).
7. Carefully lift the motor off the pump using approved lifting equipment. For lifting the motor correctly, see instructions supplied with the pump.

3.1.2 Installation

1. Carefully lift the motor onto the motor stool (1a) using approved lifting equipment.
2. Install the screws (28a), washers (32a) and nuts (36a).
3. Lubricate and tighten the nuts (36a) to the specified torque. See section 7.1 *Torques*.
4. Install the cylindrical pin (10) in the pump shaft (51).
5. Install the coupling halves (10a).
6. Lubricate and cross-tighten the screws (9). See sections 7.1 *Torques* and 7.2 *Lubricants*.
7. Install the coupling guards (7) and tighten the screws (7a). See section 7.1 *Torques*.

3.2 Shaft seal, motor stool, pump head cover, sleeve and chamber stack

3.2.1 Preparations

1. Remove the motor as described in section 3.1.1 *Removal*.
2. Close the isolating valves, if fitted, to avoid draining the pipe system.
3. Drain the pump by loosening the vent screw (18) and removing the plugs (25) and o-rings (38).

3.2.2 Dismantling

1. Clean the end of the shaft (51) with a cloth.
2. If the shaft seal (105) is to be reused, remove any marks or scratches on the shaft (51) by using service tool E together with a piece of fine emery cloth.
3. Loosen the three set screws (113) of the shaft seal (105). Note that the set screws must be loosened no more than 1/4 turn.
4. Loosen the shaft seal by using service tool A, together with service tools O and P.
5. Carefully lift the shaft seal (105) off the shaft (51). Note: Shaft seals fitted on pumps with $\varnothing 28$ and $\varnothing 36$ pump shafts can be fitted with new wear parts. See section 6. *Renewing shaft-seal wear parts*.
6. Attach approved lifting equipment to the motor stool (1a) in order to prevent it from falling before proceeding with any further dismantling.
7. Remove nuts (36) and washers (66a).
8. Remove the motor stool (1a).
9. Remove the pump head cover (2). It may be necessary to loosen it from the sleeve (55) using a plastic hammer.
10. Remove the o-ring (37) from the pump head cover (2).
11. Pull out the outlet part (3b) from the pump head cover (2).
12. CR pumps only: Remove the four screws (60) and the brackets (2c) from the pump head cover (2).
13. Fit service tool N on the pump sleeve (55). See fig. 1.

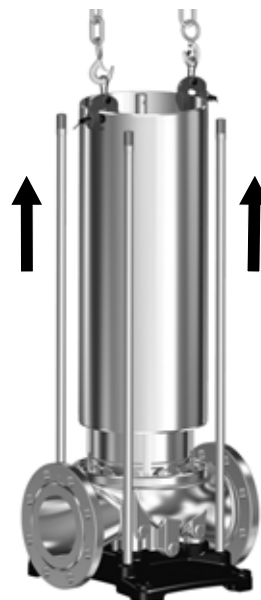


Fig. 1 Service tool N fitted on sleeve (55)

14. Attach approved lifting equipment to service tool N and lift the sleeve (55) up and away from the chamber stack.
15. Fit service tool B in the top of the pump shaft.



When handling the chamber stack, it is important to pay close attention in order not to damage the thrust-handling device (120), if fitted.

16. Attach approved lifting equipment to service tool B and lift up the chamber stack.

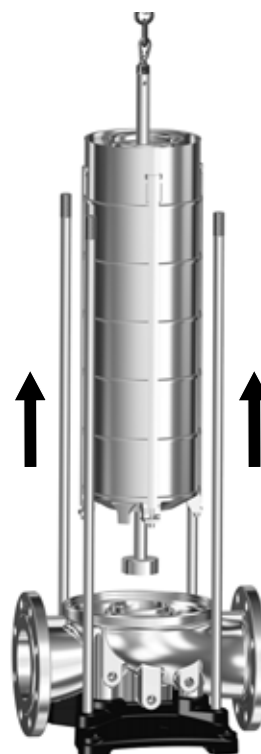


Fig. 2 Lifting the chamber stack

17. Lay down the chamber stack in a fixed position so that it cannot move.
18. Remove the o-ring (37) from the pump base.

TM07 1740 2218

TM07 1900 2318

3.2.3 Assembly

1. Lubricate and install a new o-ring (37) in the pump base (6). See section 7.2 *Lubricants*.
2. Carefully lift the chamber stack with approved lifting equipment and lower it into the pump base. Note: Make sure to align the pump inlet part (44) with the tap in the pump base (6). See fig. 3.

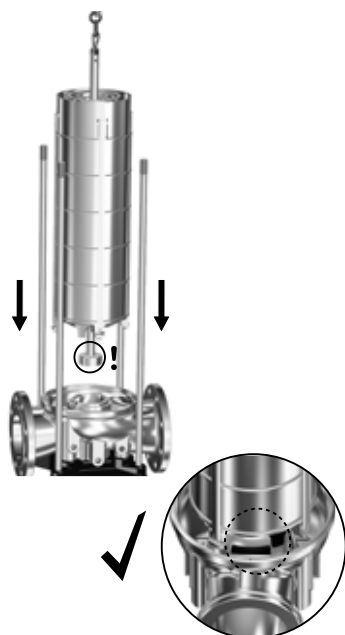


Fig. 3 Aligning inlet part (44) in pump base (6)

3. Fit service tool N on the pump sleeve (55).
4. Attach approved lifting equipment to service tool N and lift the sleeve (55) onto the pump base (6). Note: Make sure to align the sleeve (55) according to the alignment marks on the sleeve (55) and on the pump base (6). Also ensure that the sleeve (55) is pressed fully home in the pump base (6).

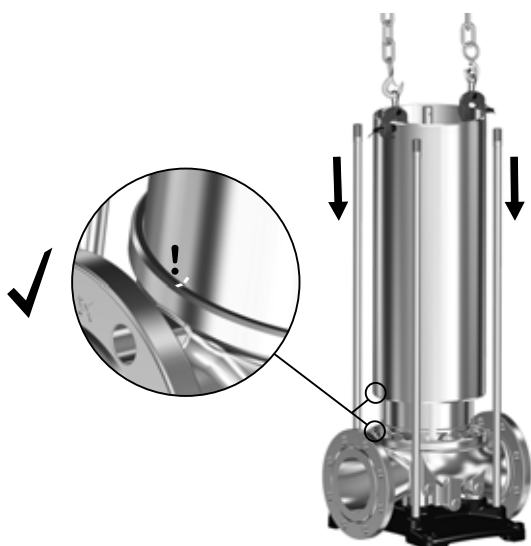


Fig. 4 Aligning sleeve (55) in pump base (6)

5. Lubricate and install a new o-ring (37) in the pump head cover. See 7.2 *Lubricants*.

6. CR pumps only: Install the four screws (60) and the brackets (2c) in the pump head cover (2). See section 7.1 *Torques*.
7. Install the outlet part (3b) in the pump head cover (2).
8. Install the pump head cover (2) on the sleeve (55). Use service tool J to centre the chamber stack in the pump-head cover (2). See fig. 5. Note: Make sure to align the pump head cover (2) according to the alignment marks on the pump head cover (2) and on the sleeve (55). See fig. 6.

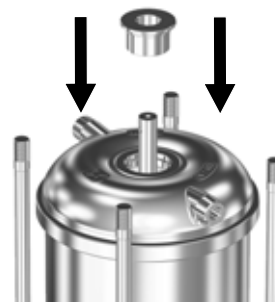


Fig. 5 Fitting service tool J in the pump head cover (2).

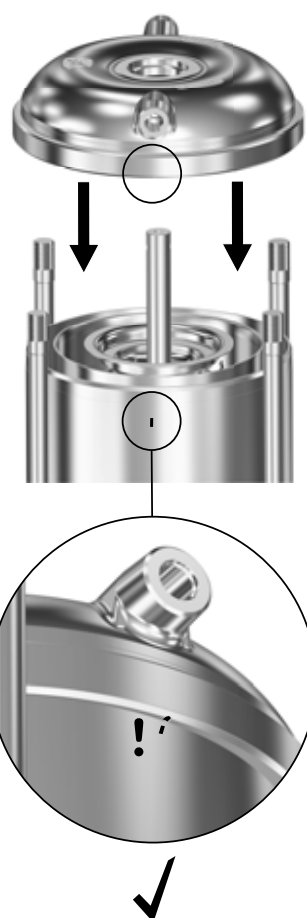


Fig. 6 Aligning pump head cover (2) and sleeve (55)

9. Attach approved lifting equipment to the motor stool (1a) and lift the motor stool (1a) onto the pump head cover (2).
10. Install washers (66a) and nuts (36).

11. Lubricate the threads of the staybolts (26) and cross-tighten the nuts (36) to the specified torque. See sections 7.1 *Torques* and 7.2 *Lubricants*.
12. Remove service tool J.
13. Clean and smooth the shaft (51) using service tool E with an emery cloth supplied with the shaft seal kit.
14. Lubricate the o-rings in the shafts seal (51). See section 7.2 *Lubricants*.
Note: Avoid lubrication on the seal faces.
15. Install the shaft seal (105) on the shaft (51) and press it home against the pump head cover (2).
16. Tighten the shaft seal hexagon nut to the specified torque by using service tool A, together with service tools O and P. See section 7.1 *Torques*.
17. Check that the height X is 71 mm \pm 2. See fig. 7.
Note: If the measured height is not within the specifications, the pump has not been assembled correctly and the pump must be dismantled to find the reason.

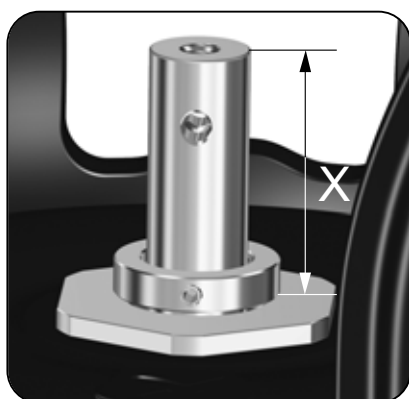


Fig. 7 Height measurement X

18. Install the cylindrical pin (10) in the pump shaft (51).
19. Install the coupling halves (10a).
20. Lubricate and tighten the screws (9), but leave loose. See section 7.2 *Lubricants*.
21. Check that the gaps on either side of the coupling halves are equal. See fig. 8.

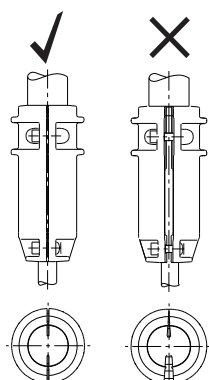


Fig. 8 Gap between coupling halves

22. Tighten the three set screws (113) to the specified torque. See section 7.1 *Torques*.
23. Lift the pump shaft with a crowbar and insert the adjusting fork F. See fig. 9.

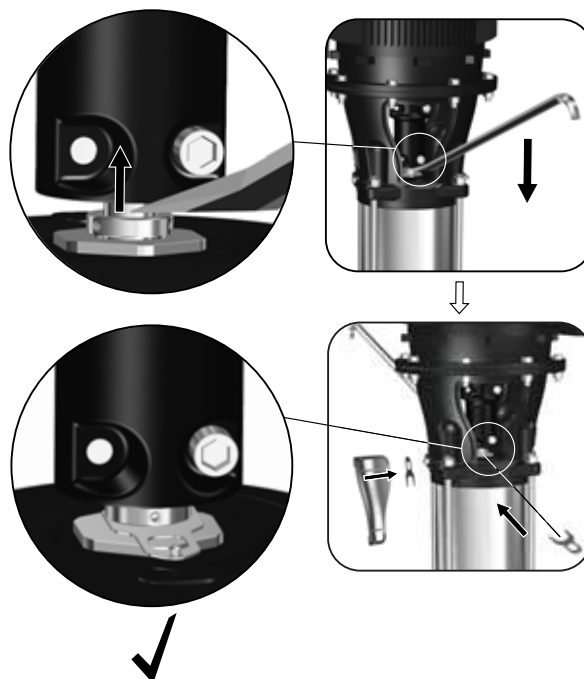


Fig. 9 Lifting pump shaft and fitting adjusting fork.

24. Cross-tighten the screws (9) to the specified torque. See 7.1 *Torques*.
25. Pull the adjusting fork F free of the shaft (51) and place it on the backside of one of the coupling guards (7). See fig. 10.



Fig. 10 Fitting adjusting fork F on the backside of coupling guard (7)

26. Install the coupling guards (7) and tighten the screws (7a). See section 7.1 *Torques*.

TM07 0868 1418

TM07 1743 2218

TM07 0969 1018

TM07 1744 2218

3.3 Thrust-handling device

This section applies only for pumps fitted with a thrust-handling device (120).



All parts for the thrust-handling device must be handled very carefully in order to avoid damaging them.

There are two ways to service the thrust-handling device:

- by completely dismantling the entire pump.
See instructions in section 3.3.1 *Servicing the thrust-handling device by dismantling the entire pump*.
- by positioning the pump horizontally and accessing the thrust-handling device from the pump base.
See instructions in section 3.3.3 *Servicing the thrust-handling device from the pump base*.

3.3.1 Servicing the thrust-handling device by dismantling the entire pump

Preparations

Removing the thrust-handling device requires that the pump has been dismantled as described in the following sections:

- 3.1.1 *Removal*
- 3.2.2 *Dismantling*.

Dismantling

1. Lay down the chamber stack on a solid surface and take the necessary precautions to prevent the chamber stack from moving while working on it.
2. Loosen and remove the nut (120f) (Note: left-hand thread) and washer (120e). Use service tools C, D, O and P to hold the shaft when loosening the nut (120f).

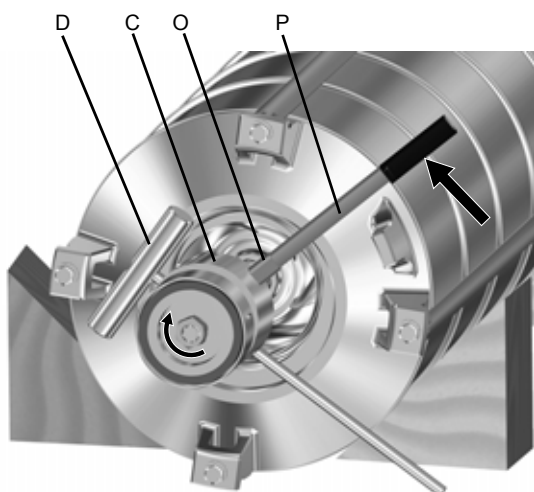


Fig. 11 Dismantling thrust-handling device from pump shaft

3. Remove thrust-handling device parts (120a, 120b, 120c, 120d). The parts come out together.
4. Remove the stationary ring (120g) together with the lifting plate (120h) by using service tool G for pulling out the parts.

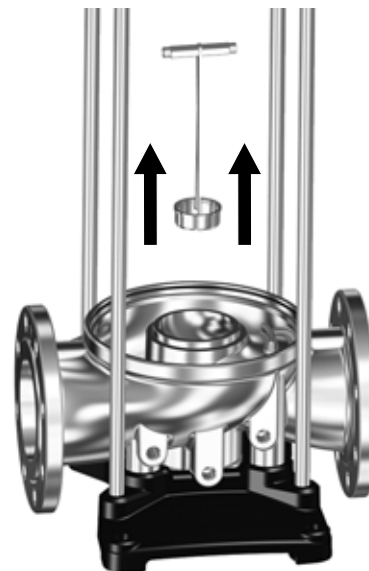


Fig. 12 Removing stationary ring (120g) and lifting plate (120h)

5. Remove the bolts (120l) from the pump base (6).
6. Remove the flange (120k) by using two bolts (120l) as extractors.

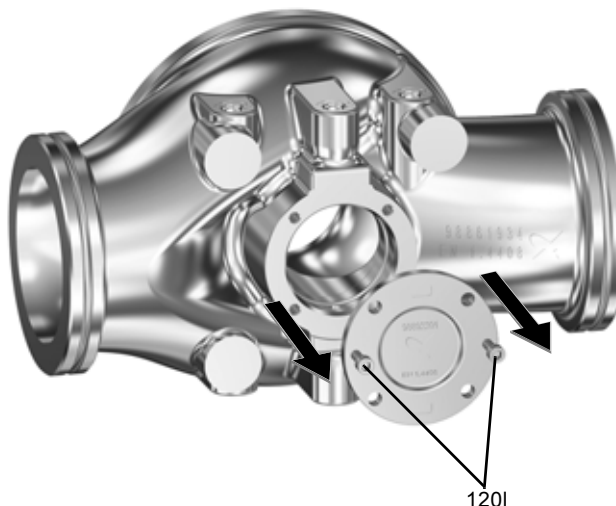


Fig. 13 Extracting the flange

7. To renew the thrust-handling device wear parts, see section 4. *Renewing thrust-handling device wear parts*.

3.3.2 Assembly

1. Install the flange (120k) in the pump base (6).
2. Fit and tighten the four screws (120l). See 7.1 *Torques*.
3. Fit the stationary ring (120g) together with the lifting plate (120h) by using service tool G.
4. Fit thrust-handling device parts (120a, 120b, 120c, 120d).
5. Fit the washer (120e) and nut (120f).
6. Tighten the nut (120f). See 7.1 *Torques*.
Note: Left-hand thread.
7. Follow the assembly instructions described in section 3.2.3 *Assembly*.

3.3.3 Servicing the thrust-handling device from the pump base

Preparations

1. Disconnect the power supply and remove the power cable.
2. Close the isolating valves, if fitted, to avoid draining the pipe system.
3. Drain the pump by opening the vent screw (18) and removing the plugs (25) with o-rings (38).
4. Secure the pump with approved lifting equipment.
5. Loosen the pipe connections to the pump.
6. Loosen the base-plate bolts.
7. Place the pump horizontally with adequate work space around the pump base (6). Follow the lifting instructions supplied with the pump.
8. Make sure that the pump cannot move when working on it. See fig. 14.

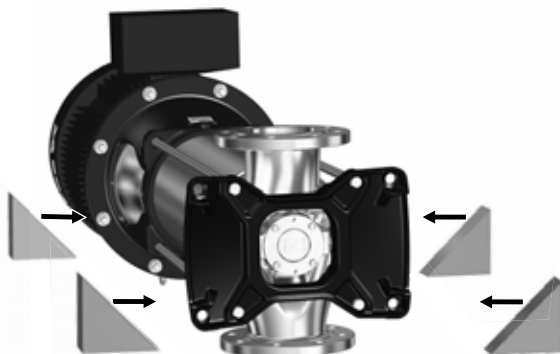


Fig. 14 Inserting wedges to avoid that the pump moves when working on it

Dismantling

1. Loosen and remove bolts (120l) from the pump base (6).
2. Remove the flange (120k) by using two bolts (120l) as extractors. See fig. 15.



Fig. 15 Extracting the flange

3. Pull out thrust-handling device parts (120g, 120h).
4. Loosen and remove the nut (Note: left-hand thread) (120f) and washer (120e). Use service tool D to hold the pump shaft (51) when tightening. See fig. 16
5. Pull out thrust-handling device parts (120a, 120b, 120c, 120d). The parts come out together.
6. To renew the thrust-handling device wear parts, see section 4. *Renewing thrust-handling device wear parts.*

3.3.4 Assembly

1. Fit thrust-handling device parts (120a, 120b, 120c, 120d).
2. Fit the washer (120e) and nut (120f).
3. Tighten the nut (120f). Use service tool D to hold the pump shaft (51) when tightening. See fig. 16.
Note: Left-hand thread.
See section 7.1 *Torques.*

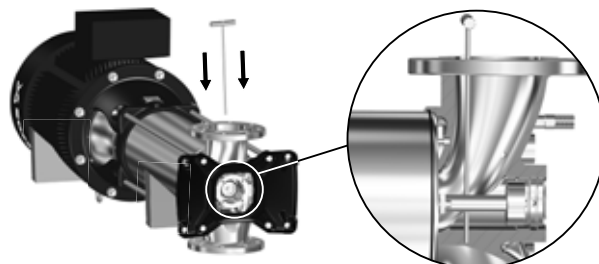


Fig. 16 Holding the pumps shaft (51) with service tool D.

4. Lubricate the stationary ring (120g) on the sides only, and avoid lubrication of the seal face.
5. Install the lifting plate (120h) in the stationary ring (120g).
6. Install the stationary ring (120g) with lifting plate (120h) in the flange (120k).
7. Fit the stationary ring (120g) together with the lifting plate (120h) in the flange (120k).
8. Install the flange (120k) in the pump base (6).
9. Fit and tighten the four screws (120l). See section 7.1 *Torques.*

4. Renewing thrust-handling device wear parts

Preparations

Renewing the thrust-handling device wear parts requires that the thrust-handling device (120) has been removed as described in one of the following sections:

- 3.3.1 *Servicing the thrust-handling device by dismantling the entire pump*
- 3.3.3 *Servicing the thrust-handling device from the pump base.*

Dismantling

1. Remove the rotating lock ring (120d) from the thrust disc (120a).
2. Remove the rotating ring (120b) from the thrust disc (120a).
3. Remove the o-ring (120c) from the thrust disc (120a).
4. Remove the o-ring (120i) and the three o-rings (120j) from the flange (120k).

Assembly

1. Install the o-ring (120i) and the three o-rings (120j) on the flange (120k).
2. Install the o-ring (120c) in the thrust disc (120a).
3. Install the rotating ring (120b) in the thrust disc (120a).
4. Install the rotating lock ring (120d) in the thrust disc (120a).

4.1 Chamber stack

The chamber stack can be serviced in two ways depending on which service tool is used for the work:

- Service tool for vice mounting (H1), see section 4.1.1 *Servicing the chamber stack in service tool for vice mounting.*
- Service tool for pump base mounting (H2), see section 4.1.2 *Servicing the chamber stack in service tool for pump base mounting.*

TM07 1895 2218

TM07 1748 2218

TM07 1749 2218

4.1.1 Servicing the chamber stack in service tool for vice mounting

Preparations

Removing the chamber stack requires that the pump has been dismantled as described in the following sections:

- 3.1.1 Removal.
- 3.2 Shaft seal, motor stool, pump head cover, sleeve and chamber stack.
- 3.3 Thrust-handling device.
- Assemble service tool H1. See fig. 17.

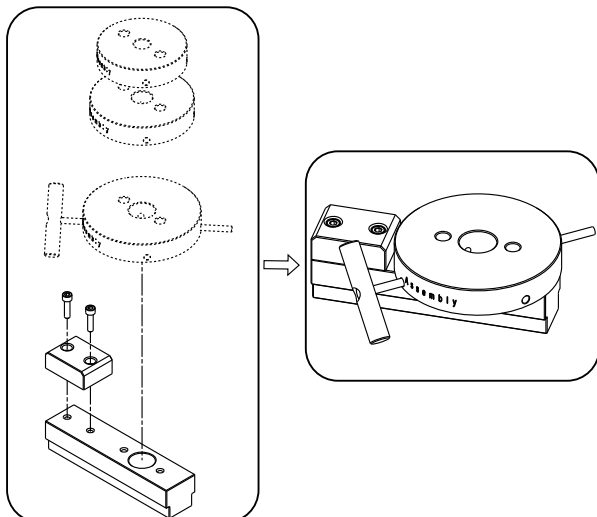


Fig. 17 Service tool H1

Procedure

1. Place service tool H1 securely in a vice. See fig. 18 for correct positioning.
2. Fit service tool B in the end of the pump shaft (51).
3. Attach approved lifting equipment to service tool B and lift the chamber stack out of the pump base (6).
4. Lift the chamber stack onto service tool H1. See fig. 18. Make sure the pump-shaft end engages with the service tool.



Fig. 18 Positioning the chamber stack in service tool H1

5. Align the hole in the pump shaft with the hole in service tool H1 marked "Dismantling". See fig. 18.
6. Fit service tool D in the hole marked "Dismantling".

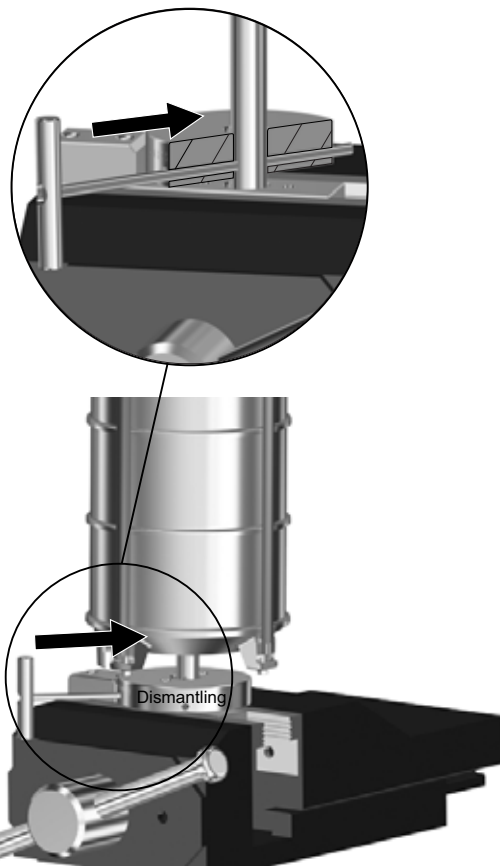


Fig. 19 Locking the shaft in service tool H1.

7. Continue to section 4.1.3 *Dismantling the chamber stack*.

4.1.2 Servicing the chamber stack in service tool for pump base mounting

Preparations

Removing the chamber stack requires that the pump has been dismantled as described in the following sections:

- 3.1.1 Removal.
- 3.2 Shaft seal, motor stool, pump head cover, sleeve and chamber stack.
- 3.3 Thrust-handling device.
- Assemble service tool H2. See fig. 20.

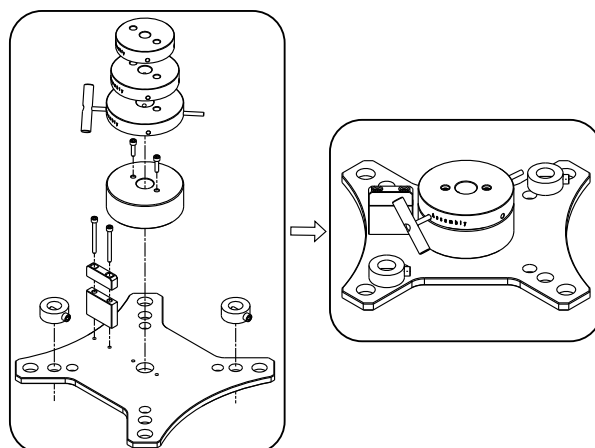


Fig. 20 Service tool H2

Procedure

1. Fit service tool B in the end of the pump shaft (51).
2. Attach approved lifting equipment to service tool B and lift the chamber stack out of the pump base (6).
3. Lay down the chamber stack on a solid working surface and take the necessary precautions to prevent the chamber stack from moving around.
4. Install service tool H2 securely on the pump base (6). See fig. 21 for correct positioning and installation.

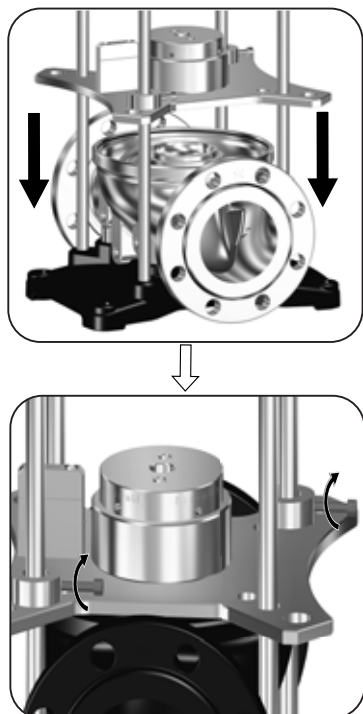


Fig. 21 Service tool H2 for mounting on pump base

5. Lift the chamber stack onto service tool H2. See fig. 22. Make sure the pump-shaft end engages with the service tool.

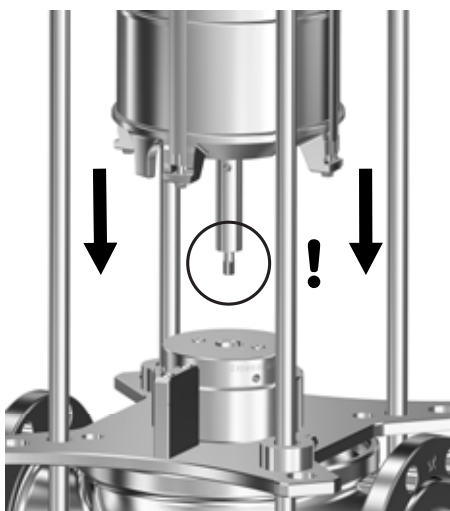


Fig. 22 Positioning the chamber stack in service tool H2

6. Align the hole in the pump shaft with the hole in service tool H2 marked "Dismantling". See fig. 23.
7. Fit service tool D in the hole marked "Dismantling". See fig. 23.

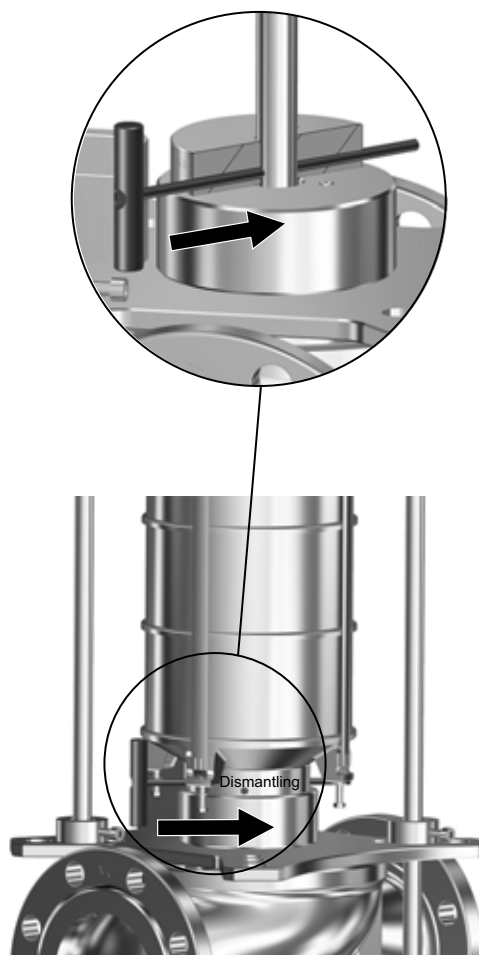


Fig. 23 Locking the shaft in service tool H2

8. Continue to section 4.1.3 *Dismantling the chamber stack*.

4.1.3 Dismantling the chamber stack

Preparations

Removing the chamber stack requires that the pump has been dismantled as described in the following sections:

- 3.1.1 *Removal*.
- 3.2 *Shaft seal, motor stool, pump head cover, sleeve and chamber stack*.
- 4.1.1 *Servicing the chamber stack in service tool for vice mounting* or section 4.1.2 *Servicing the chamber stack in service tool for pump base mounting*.

Dismantling the chamber stack also requires that it is mounted in service tool H1 or H2 as described in sections 4.1.1 *Servicing the chamber stack in service tool for vice mounting* or 4.1.2 *Servicing the chamber stack in service tool for pump base mounting*.

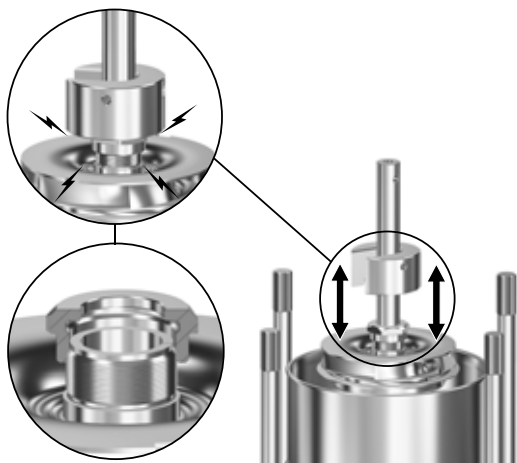
TM07 1777 2218

TM07 1778 2218

TM07 1752 2218

Procedure

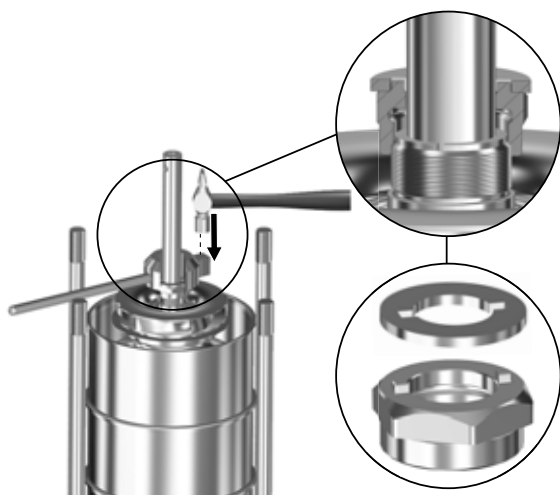
1. Loosen the screws (26 b) and remove the straps (26a).
2. Remove the top chamber (3 or 3a).
3. Loosen the split-cone nut (48) using service tool C, but leave it so that it is still engaged with a few turns of thread on the impeller (49 or 49a).
4. Install service tool I on top of the pump shaft (51) to protect the shaft recess. Note that this applies only if the top of the pump shaft has a reduced diameter compared to the rest of the shaft.
5. **For pumps with Ø22 pump shaft:** Turn service tool C around and knock it against the split-cone nut (48) to loosen the impeller (49 or 49a) from the split-cone (49b). See fig. 24.



TM07 1779 2218

Fig. 24 Loosening the impeller (49 or 49a) with service tool C

6. **For pumps with Ø28 or Ø38 pump shaft:** Insert service tool M on top of the split-cone nut (48) and use a hammer to knock service tool Q against the split-cone nut (48) to loosen the impeller (49 or 49a) from the split cone (49b). See fig. 25.



TM07 1780 2218

Fig. 25 Loosening the impeller (49 or 49a) with service tool Q

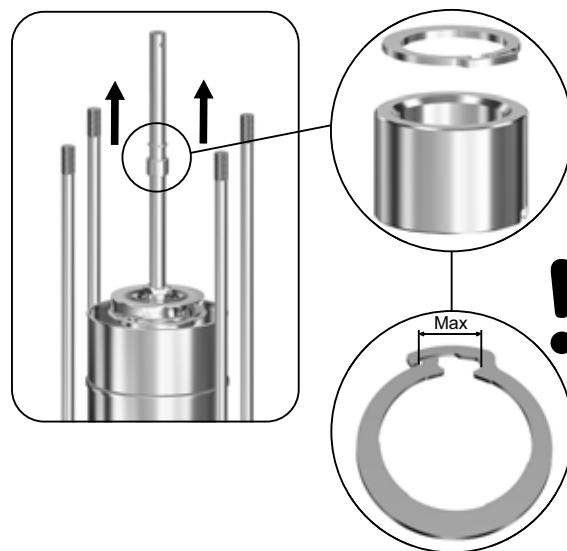
7. Remove the split-cone nut (48), split cone (49b) and impeller (49 or 49a).
8. Continue removing the remaining chambers (4 or 4a), split-cone nuts (48), split cones (49b), impellers (49 or 49a) and bearings (47a).

For pumps with Ø28 or Ø38 pump shaft:

Note that for pumps with Ø28 or Ø38 pump shaft, you must also remove the lock ring (47g). See fig 26.



Do not open the lock ring (47g) further than the restriction of the integrated locking mechanism. See fig 26.



TM07 2074 2618

Fig. 26 Maximum permissible opening of lock ring (47g)

9. Remove the inlet part (44).
10. To renew the chamber wear parts, see section 5. *Renewing chamber wear parts.*

4.1.4 Assembling the chamber stack

For chamber types, see section 7.4 *Order of assembly for chambers and impellers*.

1. Install the inlet part (44) over the pump shaft (51) which is placed in service tool H1 or H2.
2. Fit the impeller (49 or 49a) which was removed as the last one during dismantling.
3. Fit a split-cone (49b) in the impeller (49 or 49a).
4. Turn service tool C around and knock it against the split-cone (49b) to fixate the impeller (49 or 49a) to the pump shaft (51). See fig. 27.

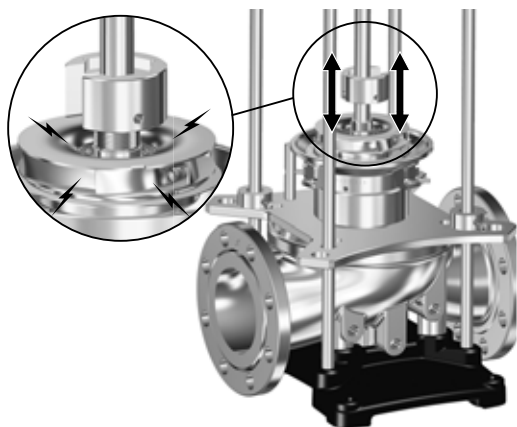


Fig. 27 Fixating the impeller (49 or 49a) to the pump shaft (51) with service tool C

5. Fit a split-cone nut (48) to the impeller.
6. Hold the impeller (49 or 49a) with a hook spanner. Tighten the split-cone nut (48) using the service tools C, O and P. See section 7.1 *Torques*.
7. Lubricate and fit the bearing (47a). See section 7.2 *Lubricants*.
8. **For pumps with Ø28 or Ø38 pump shaft:** Note that for pumps with Ø28 or Ø38 pump shaft, you must also fit the lock ring (47g). See fig. 28. Make sure that the lock ring (47g) tightens firmly around the pump shaft and holds the bearing (47a) fixed on the pump shaft.



Do not open the lock ring (47g) further than the restriction of the integrated locking mechanism. See fig. 28.

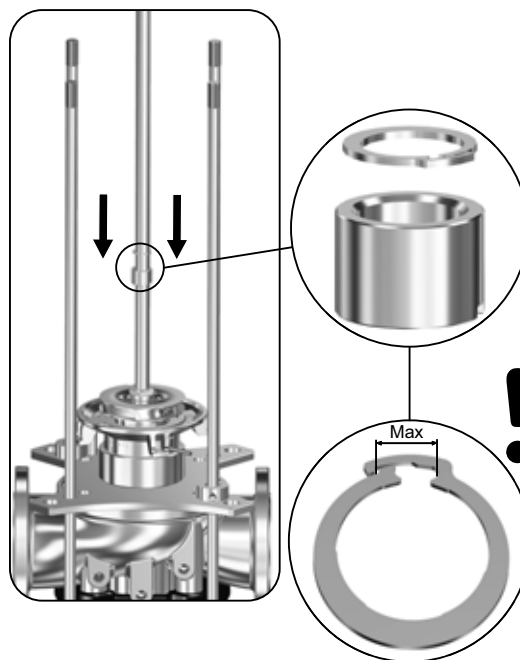


Fig. 28 Maximum permissible opening of lock ring (47g)

9. Fit the bottom chamber with bearing (4a), and press it home on the inlet part (44).
10. Continue installing the remaining chambers (4), split-cone nuts (48), split cones (49b), impellers (49 or 49a) and bearings (47a).
11. Fit the outlet part (3b) on the top chamber.
12. Fit the strap (26a), washers (26c) and screws (26b). Lubricate and tighten the screws. See sections 7.1 *Torques* and 7.2 *Lubricants*.
13. Carefully lift the chamber stack with approved lifting equipment.
14. Follow the assembly instructions described in section 3.2.3 *Assembly*.

TM07 2073 2618

5. Renewing chamber wear parts

5.1 Neck ring (45)

Neck rings (45) and neck-ring retainers (65) are installed in chambers (4 or 4a) and in the inlet part (44). Below procedure covers the renewal of neck rings in chambers as well as in inlet part.

5.1.1 Dismantling

1. Free the neck-ring retainer (65) from the chamber (4 or 4a) or inlet part (44) by using a flat-blade screwdriver.
2. Remove the neck ring (45).

5.1.2 Assembly

1. Use service tool L and select the disc size for the pump which is being serviced and remove the remaining discs from the service tool. See fig. 29.

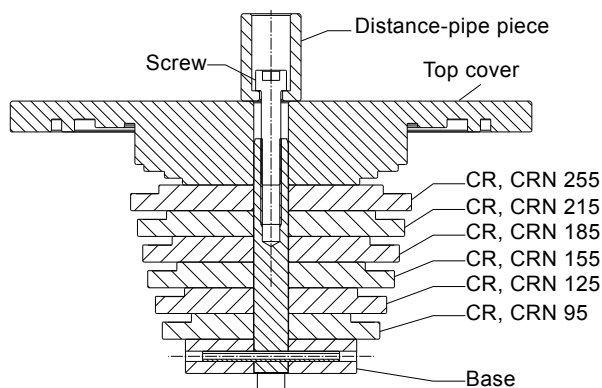


Fig. 29 Service tool L for installing the neck ring

2. Place service tool L in a vice. See fig. 30.

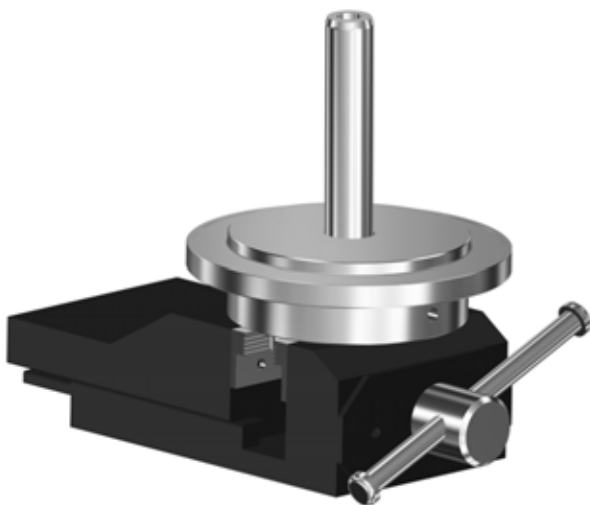


Fig. 30 Service tool L placed in a vice

3. Place the neck-ring retainer (65) on top of the disc with the driving dogs upwards. See fig. 31.

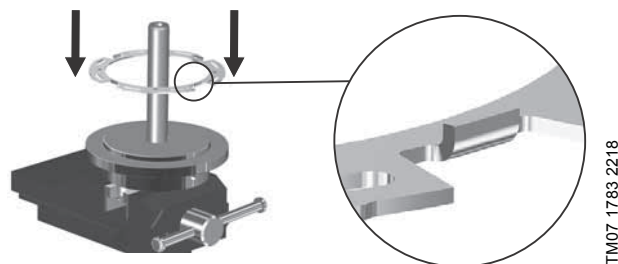


Fig. 31 Neck-ring retainer (65) placed in service tool with the tabs pointing upwards

4. Place the neck ring (45) on top of the neck-ring retainer (65). Note: The text "UP" which is stamped into the neck ring (45) must point down towards the neck ring (65). See fig. 32.

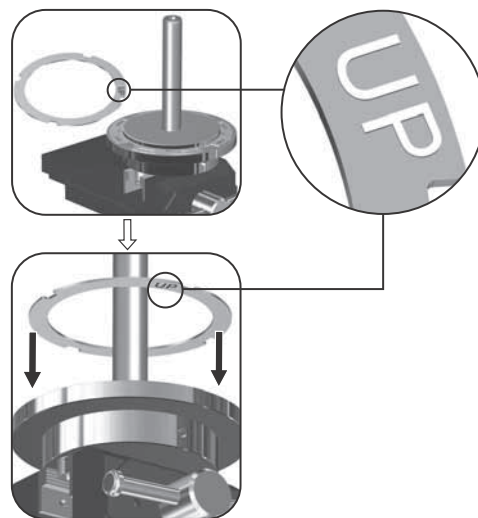


Fig. 32 Placing neck ring (45) with the text "UP" pointing down towards the neck-ring retainer (65)

5. Place the chamber (4 or 4a) or inlet part (44) over the neck ring (45) and neck-ring retainer (65). See fig. 33 and 34.
6. Place the top plate of service tool L on top of the chamber or inlet part and align it so it fits. See fig. 33 and 34.
7. Fit the distance-pipe piece and screw on the top plate of service tool L. See fig. 33 and 34.

8. Tighten the screw to 15 Nm.

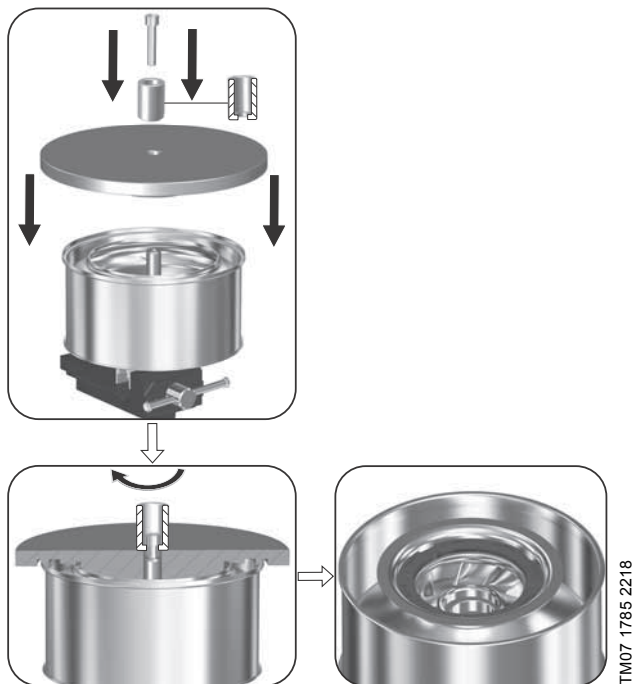


Fig. 33 Neck ring, neck-ring retainer and chamber positioned in service tool L.

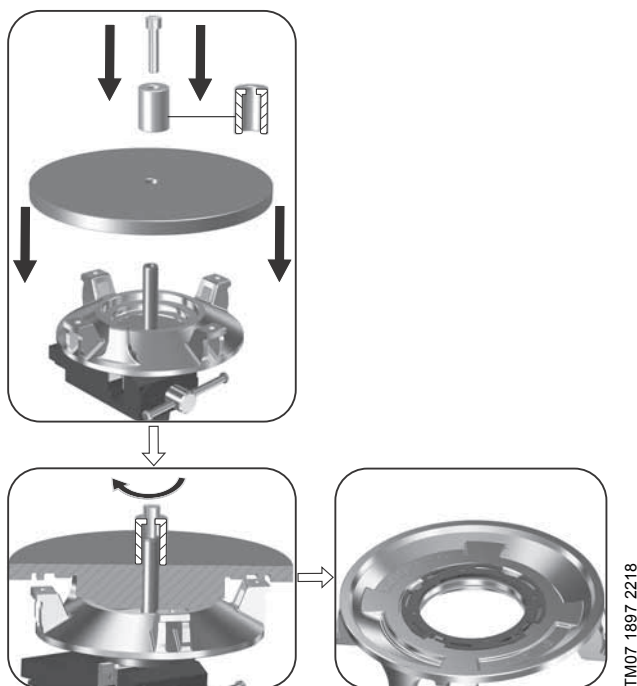


Fig. 34 Neck ring, neck-ring retainer and inlet part positioned in service tool L

5.2 Bush (47c) and retaining ring (47d)

5.2.1 Dismantling

1. Place the chamber on a flat surface.
2. Press the bush (47c) and retaining ring (47d) out of the chamber using service tool K.

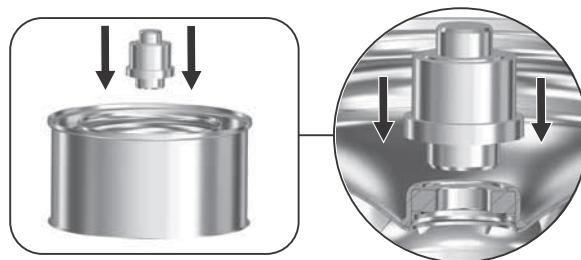


Fig. 35 Pressing out the bush (47c) and retaining ring (47d) with service tool K

5.2.2 Assembly

1. Place the chamber on a level and solid surface with the neck ring (45) facing downwards.
2. Place the bush (47c) and retaining ring (47c) on service tool K.
3. With a pressing tool, press the retaining ring (47d) and bush (47c) home in the chamber by using service tool K.

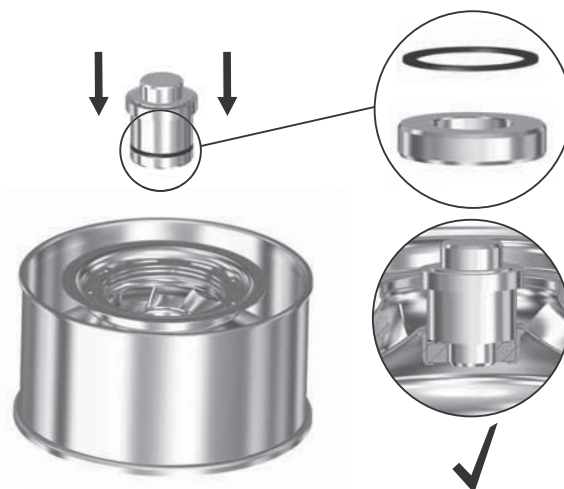


Fig. 36 Installing the bush (47c) and retaining ring (47d) with service tool K

6. Renewing shaft-seal wear parts

This section applies only for shaft seals with an inner diameter of $\varnothing 28$ or $\varnothing 36$.

Shaft seals with an inner diameter of $\varnothing 22$ cannot be serviced but must be replaced instead.

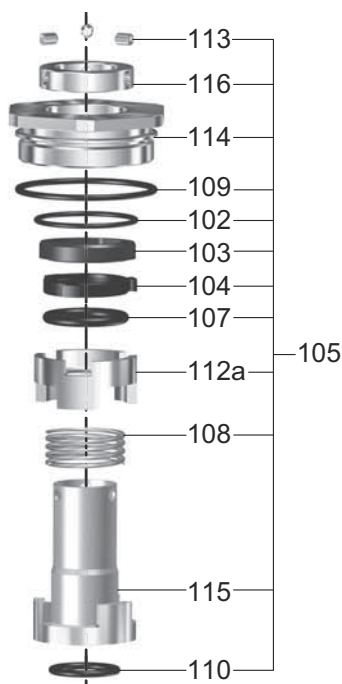


Fig. 37 Shaft-seal parts for $\varnothing 28$ and $\varnothing 36$ shaft seals

6.1 Dismantling

1. Place the shaft seal (105) on a work table.
2. Press down the shaft seal and compress the spring (108) with one hand while removing the three set screws (113).
3. Remove the lock ring (116).
4. Remove the stationary seal-ring retainer (114) together with the rotating seal ring (104).
5. Remove the o-ring (109) from the stationary seal-ring retainer (114).
6. Remove the stationary seal ring (103) from the stationary seal-ring retainer (114) by using a small flat-bladed screwdriver.
7. Remove the o-ring (102) from the stationary seal-ring retainer (114).
8. Remove the upper seal driver (112a).
9. Remove the o-ring (107) from the upper seal driver (112a).
10. Remove the spring (108).
11. Remove o-ring (110) from the shaft-seal cartridge (115).

6.2 Assembly



Do not touch the seal faces of the stationary seal ring (103) or rotating seal ring (104). Only hold these parts on their sides.

Do not apply any kind of grease or lubricant on the stationary seal ring (103) or rotating seal ring (104) since this can result in malfunction of the shaft seal.



Handle all shaft seal-parts very carefully and avoid scratching or denting them.

1. Clean and de-grease all parts.
2. Lubricate the new o-ring (110) and install it in the shaft-seal cartridge (115).
3. Install the spring (108) on the shaft-seal cartridge (115).
4. Install the upper seal driver (112a) on the shaft-seal cartridge (115).
5. Install a new o-ring (107) on the shaft-seal cartridge (115).
6. Install a new rotating seal ring (104) on the shaft-seal cartridge (115).
7. Lubricate the new o-ring (109) and install it on the stationary seal-ring retainer (114).
8. Install a new o-ring (102) in the stationary seal-ring retainer (114).
9. Install a new stationary seal ring (103) in the stationary seal-ring retainer (114).
10. Install the stationary seal-ring retainer (114) on the shaft-seal cartridge (115).
11. Fit the three set screws (113) in the lock ring (116).
12. Install the lock ring (116) on the shaft-seal cartridge (115).
13. Press down on top of the lock ring (116) while aligning the three set screws (113) with the holes in the shaft-seal cartridge (115).
14. Screw in the three set screws (113) only so much that they engage with the holes in the shaft-seal cartridge (115) and keep the shaft-seal parts together.
Note: The screws (113) must not protrude on the inside of the shaft-seal cartridge (115) since this will make it difficult to re-install the shaft seal (105) on the pump shaft (51).

TM07 1904 2318

7. Additional information

7.1 Torques

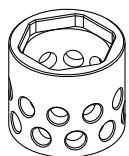
Pos.	Description	Dimensions	Torque [Nm]
7a	Coupling-guard screws	M5	4
9	Coupling screws	M10	85
		M16	100
18	Vent screw	1/2"	35
19	Plug	1/2"	35
25	Plug	1/2"	35
26b	Screws for straps	M8	22
36	Staybolt nuts	M16 (CR, CRN 95, PN 16)	160
		M20 (CR, CRN 95, PN 40)	320
		M20 (CR, CRN 125/155, PN 16)	190
		M20 (CR, CRN 125/155, PN 25/30)	320
		M24 (CR, CRN 125/155, PN 25/30/40)	625
		M30 (CR, CRN 185/215/255, PN 16)	410
		M30 (CR, CRN 185/215/255, PN 25)	710
		M30 (CR, CRN 185/215/255, PN 40)	950
36a	Motor-stool nuts	M12	40
		M16	80
		M20	150
48	Split-cone nut	Ø22 shaft (Hex 34)	70
		Ø28 shaft (Hex 46)	130
		Ø36 shaft (Hex 60)	290
60	Screws for bracket	M6	6.5
105	Shaft seal	Hex 60	100
		Hex 75	150
113	Shaft-seal-set screws	M6 x 8	6
120f	Nut with left-hand thread	M12	60
		M16	140
120l	Hexagon-socket head-cap screw	M8	22
		M10	43
L	Tool for installing neck ring	-	15

7.2 Lubricants

Pos.	Description	Lubricant	Product no.
9	Hexagon-socket screw	Un Lock	96611372
26	Staybolt		
36	Nut		
36a			
37	O-ring	Rocol Sapphire Aqua-Sil	00RM2924
47a	Bearing		
109	O-ring for shaft seal (105)		
110	O-ring for shaft seal (105)		
120c	O-ring		
120g	Stationary ring		
120j	O-ring		

7.3 Special service tools

A



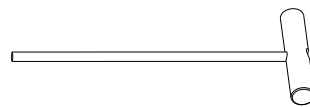
B



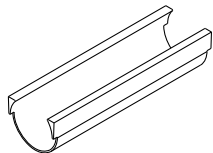
C



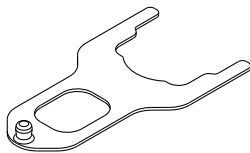
D



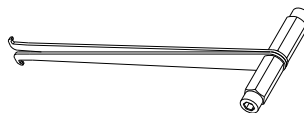
E



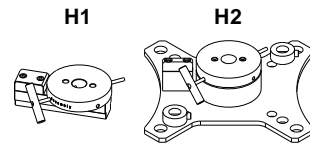
F



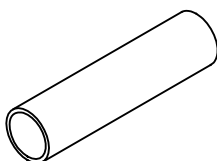
G



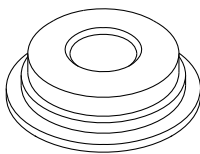
H



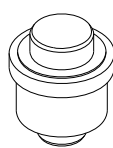
I



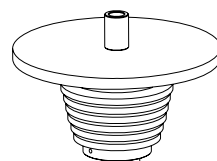
J



K



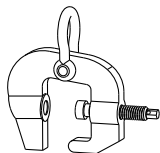
L



M



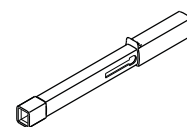
N



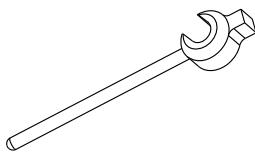
O



P



Q



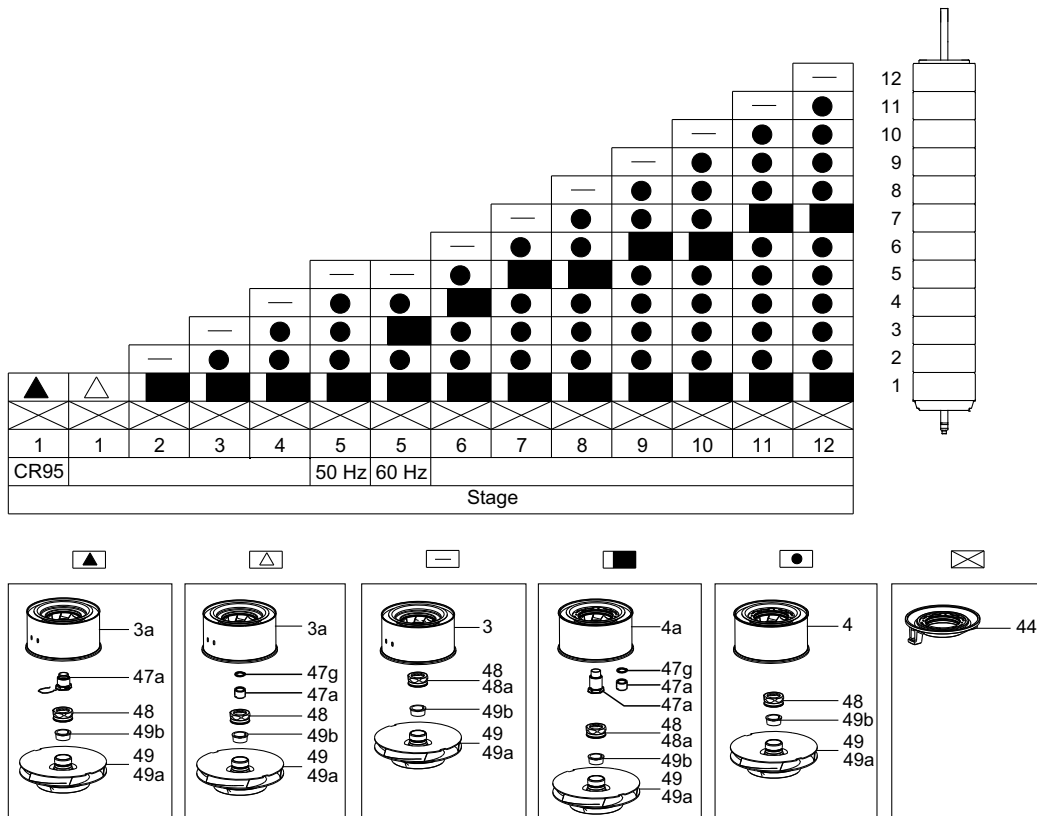
7.3.1 Special tools

Pos.	Description	For pos.	Further information	Part number
A	Service tool for loosening and tightening shaft seal	105	For Ø22 pump shafts	99072586
			For Ø28 and Ø36 pump shafts	99072587
B	Eyebolt with swivel function	51	M10 x 1.5	-
C	Key for split-cone nut	48	For Ø22 pump shafts	SV0004
			For Ø28 pump shafts	99072584
			For Ø36 pump shafts	99072585
D	T-pin	51	-	99072581
E	Service tool for smoothening out marks on shaft	51	-	-
F	Adjusting fork	105	For Ø22, Ø28 and Ø36 pump shafts	-
G	Hook for thrust-handling device	120h	-	99176979
H1	Service tool for chamber stack		For vice	99081919
H2			For pump base	
I	Protection pipe for shaft	51	For Ø28 pump shafts reduced to Ø22 shaft ends	99081891
			For Ø36 pump shafts reduced to Ø22 shaft ends	99081920
			For Ø36 pump shafts reduced to Ø28 shaft ends	99081890
J	Service tool for alignment of pump head, sleeve and chamber stack	2, 51	For Ø22 pump shafts	99072588
			For Ø28 pump shafts	99072589
			For Ø36 pump shafts	99072590
K	Punch tools for bush	47, 47c, 47d	For Ø22 pump shafts	98369955
			For Ø28 and Ø36 pump shafts	99081918
L	Tool for installing neck ring	45a	For CR, CRN 95 - 255	99447875
M	Protective disc	48	For Ø28 pump shafts	99381867
			For Ø36 pump shafts	99381868
N	Screw-clamp for outer sleeve	55	-	99139064
O	Pin for torque wrench	105	14 x 18 x Ø14	SV0402
P	Torque wrench	105	-	-
Q	Hammering tool	48	For Ø28 pump shafts	99424834
			For Ø36 pump shafts	99424835

7.4 Order of assembly for chambers and impellers

The assembly of the pump is illustrated in the following drawings. Each symbol corresponds to a different chamber.

Note: Pos. 49 is the standard size impeller. Pos. 49a is an impeller with reduced diameter, 2/3 of standard size.



7.5 Drawings

7.5.1 Overview of drawings

Pumps without thrust-handling device

Drawing type	Pump	Page number
Exploded drawing	Pumps with Ø22 shaft	22
	Pumps with Ø28 and Ø36 shaft	23
Sectional drawing	Pumps with Ø22 shaft	25
	Pumps with Ø28 and Ø36 shaft	26

Pumps with thrust-handling device

Drawing type	Pump	Page number
Exploded drawing	Pumps with Ø28 and Ø36 shaft	24
Sectional drawing		27

7.5.2 Exploded views

Pumps with Ø22 shaft and without thrust-handling device

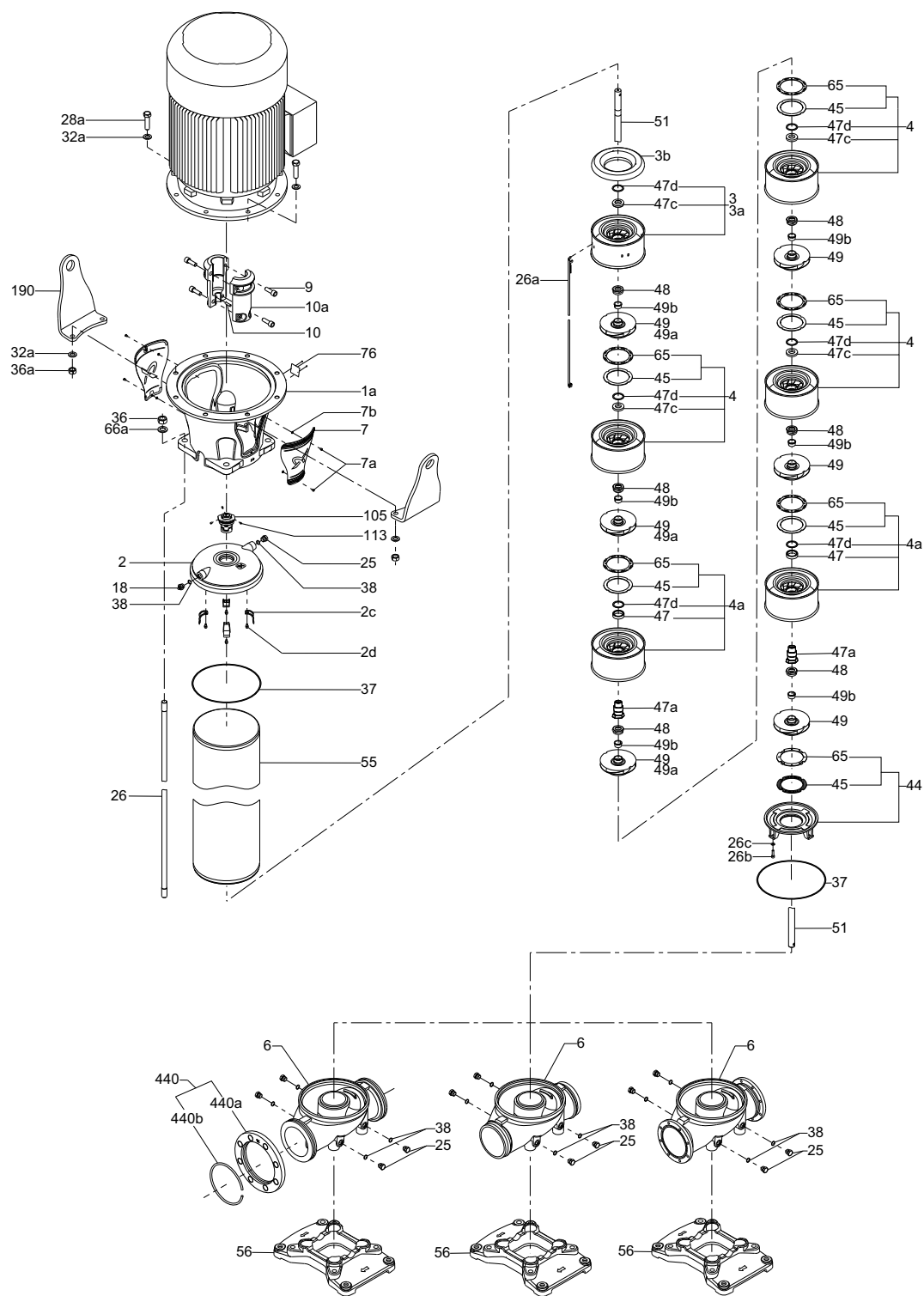
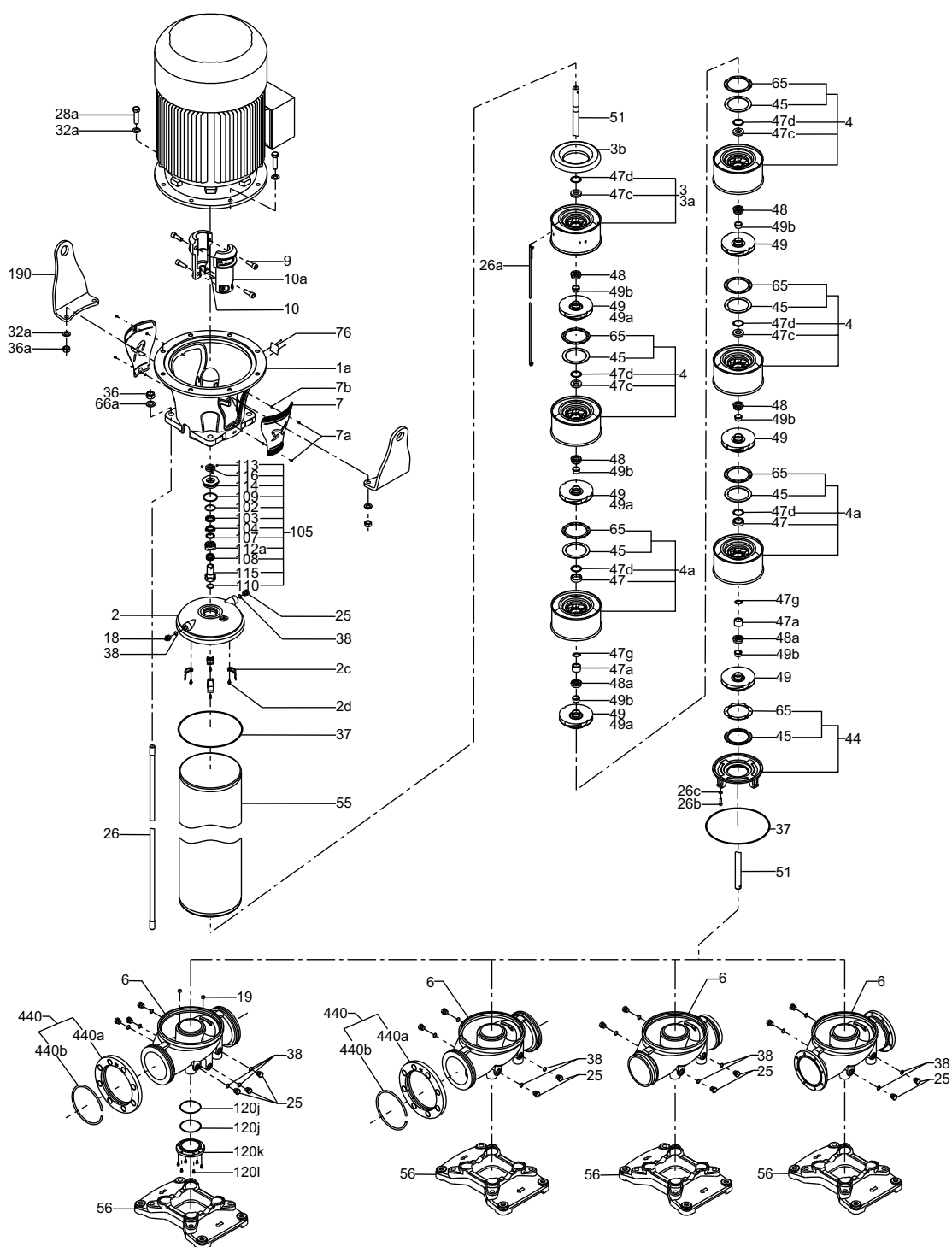


Fig. 38 Exploded view of CR, CRN pump with Ø22 shaft and without thrust-handling device

Fig. 39 Exploded view of CR, CRN pump with Ø28 or Ø36 shaft and without thrust-handling device



Pumps with Ø28 or Ø36 shaft and with thrust-handling device

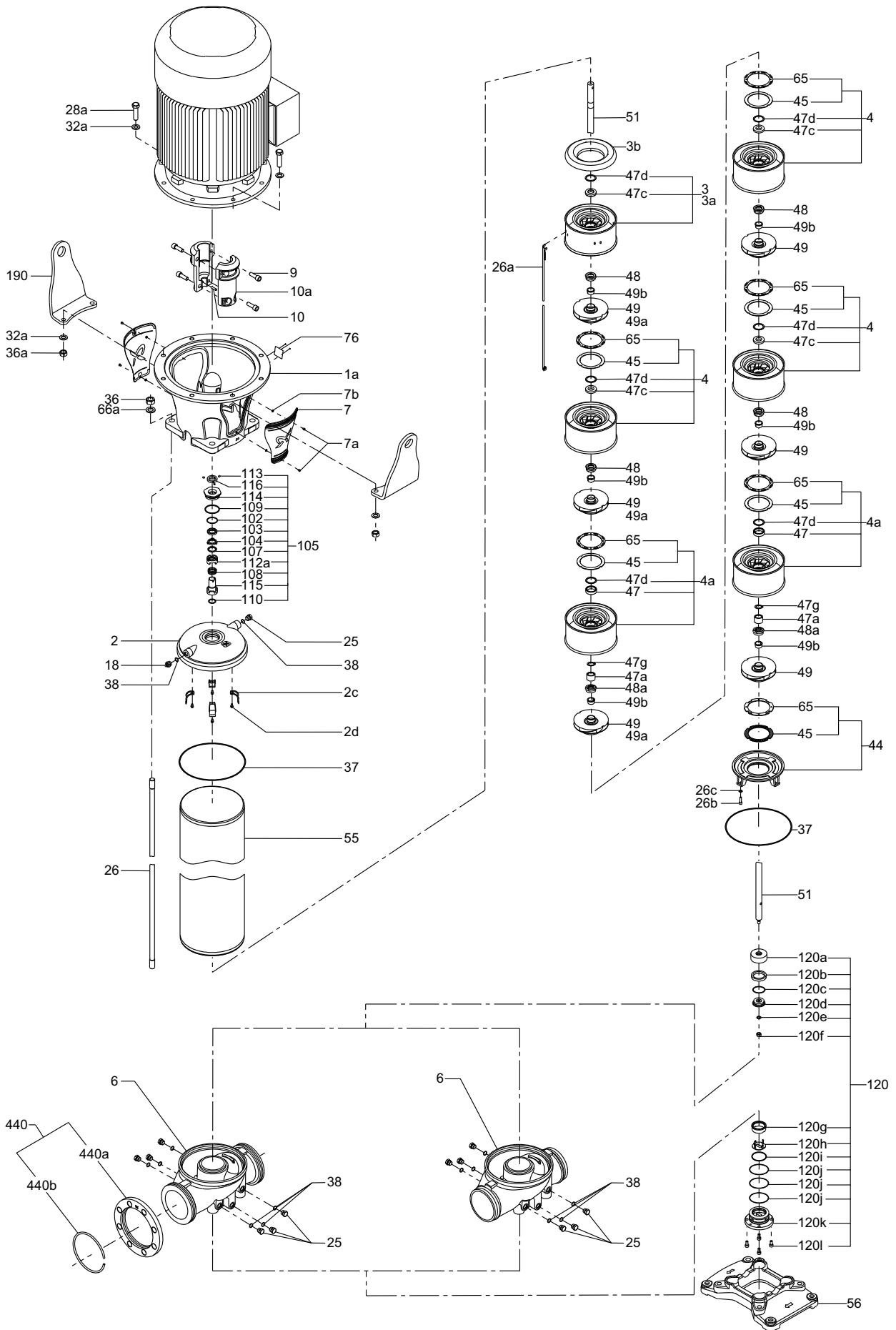
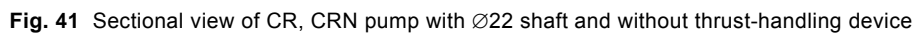
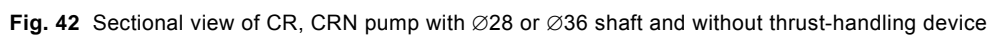


Fig. 40 Exploded view of CR, CRN pump with Ø28 or Ø36 shaft and with thrust-handling device

Pumps with Ø22 shaft and without thrust-handling device





Pumps with Ø28 or Ø36 shaft and with thrust-handling device

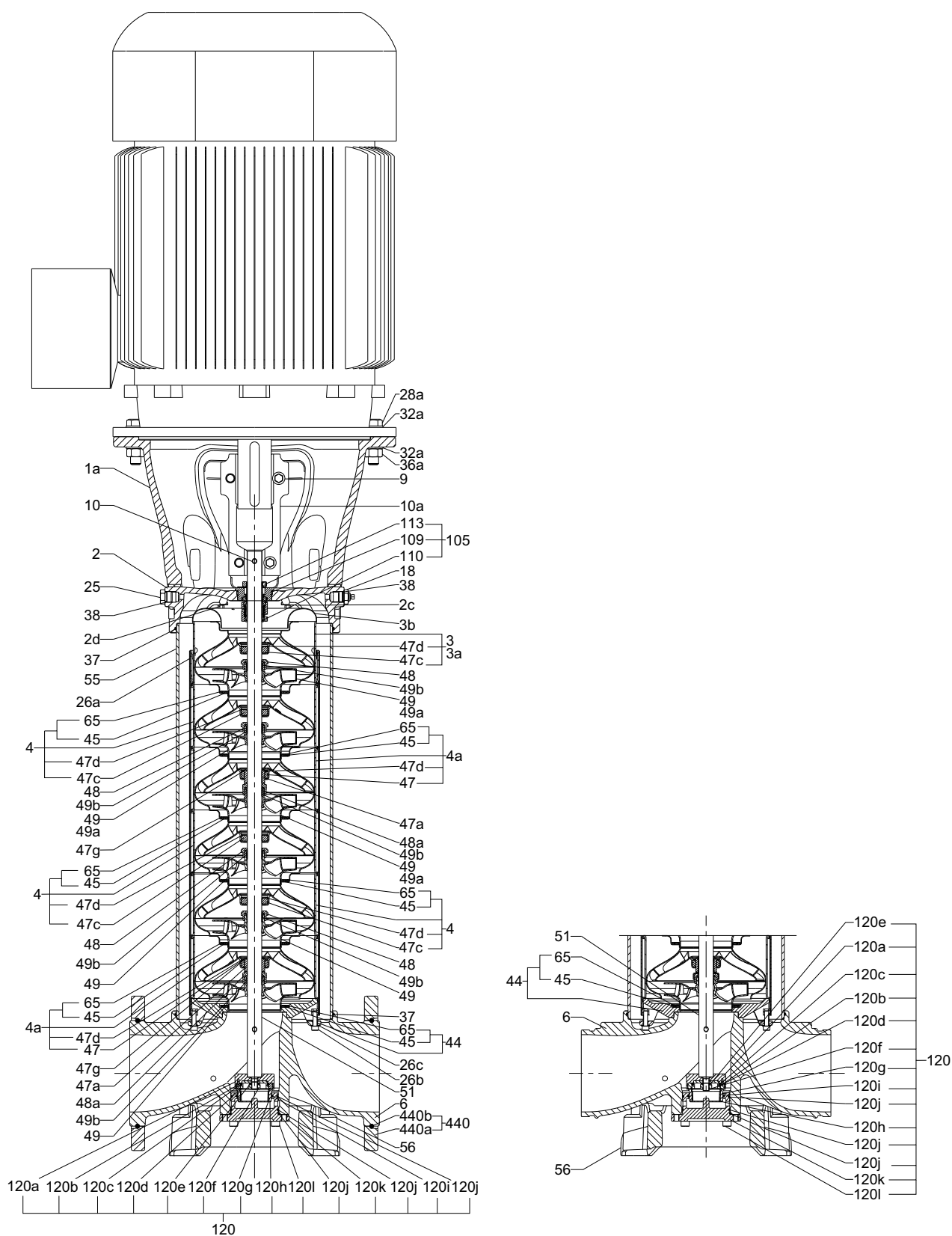


Fig. 43 Sectional view of CR, CRN pump with Ø28 or Ø36 shaft and with thrust-handling device

Argentina

Bombas GRUNDFOS de Argentina S.A.
Ruta Panamericana km. 37.500 Centro
Industrial Garin
1619 Garin Pcia. de B.A.
Phone: +54-3327 414 444
Telefax: +54-3327 45 3190

Australia

GRUNDFOS Pumps Pty. Ltd.
P.O. Box 2040
Regency Park
South Australia 5942
Phone: +61-8-8461-4611
Telefax: +61-8-8340 0155

Austria

GRUNDFOS Pumpen Vertrieb Ges.m.b.H.
Grundfosstraße 2
A-5082 Grödig/Salzburg
Tel.: +43-6246-883-0
Telefax: +43-6246-883-30

Belgium

N.V. GRUNDFOS Bellux S.A.
Boomsesteenweg 81-83
B-2630 Aartselaar
Tél.: +32-3-870 7300
Télécopie: +32-3-870 7301

Belarus

Представительство ГРУНДФОС в
Минске
220125, Минск
ул. Шафарьянская, 11, оф. 56, БЦ
«Порт»
Тел.: +7 (375 17) 286 39 72/73
Факс: +7 (375 17) 286 39 71
E-mail: minsk@grundfos.com

Bosnia and Herzegovina

GRUNDFOS Sarajevo
Zmaja od Bosne 7-7A,
BH-71000 Sarajevo
Phone: +387 33 592 480
Telefax: +387 33 590 465
www.ba.grundfos.com
e-mail: grundfos@bih.net.ba

Brazil

BOMBAS GRUNDFOS DO BRASIL
Av. Humberto de Alencar Castelo Branco,
630
CEP 09850 - 300
São Bernardo do Campo - SP
Phone: +55-11 4393 5533
Telefax: +55-11 4343 5015

Bulgaria

Grundfos Bulgaria EOOD
Slatina District
Iztochna Tangenta street no. 100
BG - 1592 Sofia
Tel. +359 2 49 22 200
Fax. +359 2 49 22 201
email: bulgaria@grundfos.bg

Canada

GRUNDFOS Canada Inc.
2941 Brighton Road
Oakville, Ontario
L6H 6C9
Phone: +1-905 829 9533
Telefax: +1-905 829 9512

China

GRUNDFOS Pumps (Shanghai) Co. Ltd.
10F The Hub, No. 33 Suhong Road
Minhang District
Shanghai 201106
PRC
Phone: +86 21 612 252 22
Telefax: +86 21 612 253 33

COLOMBIA

GRUNDFOS Colombia S.A.S.
Km 1.5 vía Siberia-Cota Conj. Potrero
Chico,
Parque Empresarial Arcos de Cota Bod.
1A,
Cota, Cundinamarca
Phone: +57(1)-2913444
Telefax: +57(1)-8764586

Croatia

GRUNDFOS CROATIA d.o.o.
Buzinski prilaz 38, Buzin
HR-10010 Zagreb
Phone: +385 1 6595 400
Telefax: +385 1 6595 499
www.hr.grundfos.com

GRUNDFOS Sales Czechia and Slovakia s.r.o.

Čajkovského 21
779 00 Olomouc
Phone: +420-585-716 111

Denmark

GRUNDFOS DK A/S
Martin Bachs Vej 3
DK-8850 Bjerringbro
Tlf.: +45-87 50 50 50
Telefax: +45-87 50 51 51
E-mail: info_GDK@grundfos.com
www.grundfos.com/DK

Estonia

GRUNDFOS Pumps Eesti OÜ
Peterburi tee 92G
11415 Tallinn
Tel: + 372 606 1690
Fax: + 372 606 1691

Finland

OY GRUNDFOS Pumput AB
Trukkikuja 1
FI-01360 Vantaa
Phone: +358-(0) 207 889 500

France

Pompes GRUNDFOS Distribution S.A.
Parc d'Activités de Chesnes
57, rue de Malacombe
F-38290 St. Quentin Fallavier (Lyon)
Tél.: +33-4 74 82 15 15
Télécopie: +33-4 74 94 10 51

Germany

GRUNDFOS GMBH
Schlüterstr. 33
40699 Erkrath
Tel.: +49-(0) 211 929 69-0
Telefax: +49-(0) 211 929 69-3799
e-mail: infoservice@grundfos.de
Service in Deutschland:
e-mail: kundendienst@grundfos.de

Greece

GRUNDFOS Hellas A.E.B.E.
20th km. Athinon-Markopoulou Av.
P.O. Box 71
GR-19002 Peania
Phone: +0030-210-66 83 400
Telefax: +0030-210-66 46 273

Hong Kong

GRUNDFOS Pumps (Hong Kong) Ltd.
Unit 1, Ground floor
Siu Wai Industrial Centre
29-33 Wing Hong Street &
68 King Lam Street, Cheung Sha Wan
Kowloon
Phone: +852-27861706 / 27861741
Telefax: +852-27858664

Hungary

GRUNDFOS Hungária Kft.
Tópark u. 8
H-2045 Törökbálint,
Phone: +36-23 511 110
Telefax: +36-23 511 111

India

GRUNDFOS Pumps India Private Limited
118 Old Mahabalipuram Road
Thoraipakkam
Chennai 600 096
Phone: +91-44 2496 6800

Indonesia

PT. GRUNDFOS POMPA
Graha Intirub Lt. 2 & 3
Jln. Cililitan Besar No.454. Makasar,
Jakarta Timur
ID-Jakarta 13650
Phone: +62 21-469-51900
Telefax: +62 21-460 6910 / 460 6901

Ireland

GRUNDFOS (Ireland) Ltd.
Unit A, Merrywell Business Park
Ballymount Road Lower
Dublin 12
Phone: +353-1-4089 800
Telefax: +353-1-4089 830

Italy

GRUNDFOS Pompe Italia S.r.l.
Via Gran Sasso 4
I-20060 Truccazzano (Milano)
Tel.: +39-02-95838112
Telefax: +39-02-95309290 / 95838461

Japan

GRUNDFOS Pumps K.K.
1-2-3, Shin-Miyakoda, Kita-ku,
Hamamatsu
431-2103 Japan
Phone: +81 53 428 4760
Telefax: +81 53 428 5005

Korea

GRUNDFOS Pumps Korea Ltd.
6th Floor, Aju Building 679-5
Yeoksam-dong, Kangnam-ku, 135-916
Seoul, Korea
Phone: +82-2-5317 600
Telefax: +82-2-5633 725

Latvia

SIA GRUNDFOS Pumps Latvia
Deglava biznesa centrs
Augusta Deglava iela 60, LV-1035, Rīga,
Tālr.: + 371 714 9640, 7 149 641
Fakss: + 371 914 9646

Lithuania

GRUNDFOS Pumps UAB
Smolensko g. 6
LT-03201 Vilnius
Tel: + 370 52 395 430
Fax: + 370 52 395 431

Malaysia

GRUNDFOS Pumps Sdn. Bhd.
7 Jalan Peguam U1/25
Glenmarie Industrial Park
40150 Shah Alam
Selangor
Phone: +60-3-5569 2922
Telefax: +60-3-5569 2866

Mexico

Bombas GRUNDFOS de México S.A. de
C.V.
Boulevard TLC No. 15
Parque Industrial Stiva Aeropuerto
Apodaca, N.L. 66600
Phone: +52-81-8144 4000
Telefax: +52-81-8144 4010

Netherlands

GRUNDFOS Netherlands
Veluwezoom 35
1326 AE Almere
Postbus 22015
1302 CA ALMERE
Tel.: +31-88-478 6336
Telefax: +31-88-478 6332
E-mail: info_gnl@grundfos.com

New Zealand

GRUNDFOS Pumps NZ Ltd.
17 Beatrice Tinsley Crescent
North Harbour Industrial Estate
Albany, Auckland
Phone: +64-9-415 3240
Telefax: +64-9-415 3250

Norway

GRUNDFOS Pumper A/S
Strømsveien 344
Postboks 235, Leirdal
N-1011 Oslo
Tlf.: +47-22 90 47 00
Telefax: +47-22 32 21 50

Poland

GRUNDFOS Pompy Sp. z o.o.
ul. Klonowa 23
Baranowo k. Poznania
PL-62-081 Przeźmierowo
Tel: (+48-61) 650 13 00
Fax: (+48-61) 650 13 50

Portugal

Bombas GRUNDFOS Portugal, S.A.
Rua Calvet de Magalhães, 241
Apartado 1079
P-2770-153 Paço de Arcos
Tel.: +351-21-440 76 00
Telefax: +351-21-440 76 90

Romania

GRUNDFOS Pompe România SRL
Bd. Biruintei, nr 103
Pantelimon county Ilfov
Phone: +40 21 200 4100
Telefax: +40 21 200 4101
E-mail: romania@grundfos.ro

Russia

ООО Грундфос Россия
ул. Школьная, 39-41
Москва, RU-109544, Russia
Тел. (+7) 495 564-88-00 (495) 737-30-00
Факс (+7) 495 564 8811
E-mail grundfos.moscow@grundfos.com

Serbia

Grundfos Srbija d.o.o.
Omladinskih brigada 90b
11070 Novi Beograd
Phone: +381 11 2258 740
Telefax: +381 11 2281 769
www.rs.grundfos.com

Singapore

GRUNDFOS (Singapore) Pte. Ltd.
25 Jalan Tukang
Singapore 619264
Phone: +65-6681 9688
Telefax: +65-6681 9689

Slovakia

GRUNDFOS s.r.o.
Prievozská 4D
821 09 BRATISLAVA
Phona: +421 2 5020 1426
sk.grundfos.com

Slovenia

GRUNDFOS LJUBLJANA, d.o.o.
Leskoškova 9e, 1122 Ljubljana
Phone: +386 (0) 1 568 06 10
Telefax: +386 (0)1 568 06 19
E-mail: tehniko-si@grundfos.com

South Africa

GRUNDFOS (PTY) LTD
Corner Mountjoy and George Allen Roads
Wilbart Ext. 2
Bedfordview 2008
Phone: (+27) 11 579 4800
Fax: (+27) 11 455 6066
E-mail: lsmart@grundfos.com

Spain

Bombas GRUNDFOS España S.A.
Camino de la Fuentecilla, s/n
E-28110 Algete (Madrid)
Tel.: +34-91-848 8800
Telefax: +34-91-628 0465

Sweden

GRUNDFOS AB
Box 333 (Lunnagårdsgatan 6)
431 24 Mölndal
Tel.: +46 31 332 23 000
Telefax: +46 31 331 94 60

Switzerland

GRUNDFOS Pumpen AG
Bruggacherstrasse 10
CH-8117 Fällanden/ZH
Tel.: +41-44-806 8111
Telefax: +41-44-806 8115

Taiwan

GRUNDFOS Pumps (Taiwan) Ltd.
7 Floor, 219 Min-Chuan Road
Taichung, Taiwan, R.O.C.
Phone: +886-4-2305 0868
Telefax: +886-4-2305 0878

Thailand

GRUNDFOS (Thailand) Ltd.
92 Chaloen Phrakiat Rama 9 Road,
Dokmai, Pravej, Bangkok 10250
Phone: +66-2-725 8999
Telefax: +66-2-725 8998

Turkey

GRUNDFOS POMPA San. ve Tic. Ltd. Sti.
Gebze Organize Sanayi Bölgesi
İhsan dede Caddesi,
2. yol 200. Sokak No. 204
41490 Gebze/ Kocaeli
Phone: +90 - 262-679 7979
Telefax: +90 - 262-679 7905
E-mail: satis@grundfos.com

Ukraine

Бізнес Центр Європа
Столичне шосе, 103
м. Київ, 03131, Україна
Телефон: (+38 044) 237 04 00
Факс.: (+38 044) 237 04 01
E-mail: ukraine@grundfos.com

United Arab Emirates

GRUNDFOS Gulf Distribution
P.O. Box 16768
Jebel Ali Free Zone
Dubai
Phone: +971 4 8815 166
Telefax: +971 4 8815 136

United Kingdom

GRUNDFOS Pumps Ltd.
Grovebury Road
Leighton Buzzard/Beds. LU7 4TL
Phone: +44-1525-850000
Telefax: +44-1525-850011

U.S.A.

GRUNDFOS Pumps Corporation
17100 West 118th Terrace
Olathe, Kansas 66061
Phone: +1-913-227-3400
Telefax: +1-913-227-3500

Uzbekistan

Grundfos Tashkent, Uzbekistan The Repre-
sentative Office of Grundfos Kazakhstan in
Uzbekistan
38a, Oybek street, Tashkent
Телефон: (+998) 71 150 3290 / 71 150
3291
Факс: (+998) 71 150 3292

Addresses Revised 14.03.2018

99233360 0718
ECM: 1238281

The name Grundfos, the Grundfos logo, and be think innovate are registered trademarks owned by Grundfos Holding A/S or Grundfos A/S, Denmark. All rights reserved worldwide. © Copyright Grundfos Holding A/S