



**Griffco Valve Inc.**  
 6010 N. Bailey Ave., Suite 1B  
 Amherst, NY 14226 USA  
 Phone: +1 716 835-0891  
 Fax: +1 716 835-0893

# PRMS Series Relief Valve with Alarm Switch



## Features:

- Integrated Into Pressure Relief Valve
- Adjustable Pressure Setting
- Isolation Chamber To Protect Switch
- SPST Switch 100 VA Max
- Robust, Machined Construction
- Filling/Adjustment Screw
- Wide Range of Materials
- Optional Gauge Port

## Operation:

**Griffco Pressure Relief Valve Alarm Switch** is installed in an integrated gauge guard mounted to the bottom of the relief valve. When the pressure relief valve relieves the overpressure the pressure is transmitted through the isolating diaphragm to the switch. The switch changes condition and an alarm signal is triggered. Once the alarm condition is corrected the switch returns to its original position.

**Griffco Pressure Relief Valve Pressure Switch** is designed to protect chemical feed pumps and systems by sending an alarm signal to a control station or panel. The signal is to alert personnel that there is a problem in the chemical feed system and the relief valve is open.

The switch has an adjustable set point and multiple customer selected ranges. Switch housings are available in zinc plated steel or optional 316L SS. A convenient fill port on the side of the gauge guard is provided.

## Technical Data:

<b>Sizes: Model PRMS</b>		<b>DN 8, DN 10, DN 15 (1/4", 3/8", 1/2")</b>			
<b>Connections:</b>			<b>NPT, BSPT Socket, Union</b>		
<b>Pressure Adjustment</b>			<b>Standard: .7 – 10 Bar, (10-150 psi); Optional: 0 – 4 Bar (0-50 psi)</b>		
<b>Switch Pressure Range</b>			<b>Standard: 15 – 60 psi, (1 – 4 Bar); Optional: 40 – 150 psi, (3 – 10 Bar)</b>		
<b>Switch Rating</b>			<b>100 VA max</b>		
<b>Flow Rates @ 150 psi</b>			<b>Shipping Weight: kgs (lbs)</b>		
<b>Size</b>	<b>Pulsating lph (gph)</b>	<b>Continuous lph (gpm)</b>	<b>Plastic</b>		
1/4" DN8	375 (100)	1135 (5)	0.90 (2)		
3/8" DN10	757 (200)	2271 (10)	0.90 (2)		
1/2" DN15	1135 (300)	3400 (15)	0.90 (2)		
<b>Max Temperature: °C (°F)</b>			<b>PVC: 60° (140°); CPVC &amp; PP: 90° (195°); PVDF: 150° (300°),</b>		
<b>Max Operating Pressure @ 30°C: (psi)</b>			<b>Plastic/Noryl: 25 Bar (375 psi)</b>		
<b>Materials of Construction:</b>					
<b>Diaphragm</b>			<b>Standard: PTFE / EPDM, Optional: Viton, Hypalon, PTFE / Viton</b>		
<b>Valve Top</b>			<b>Standard: Noryl</b>		
<b>Valve Body</b>			<b>PVC, CPVC, PP, PVDF</b>		
<b>Switch Body</b>			<b>Standard: Zinc Plated Steel, Optional: 316L SS</b>		

## Product Codes For Ordering:

PRMS      □ □ □ □ □ □  
                  1    2    3    4    5

### 1 = Size

025 – 1/4"  
 038 – 3/8"  
 050 – 1/2"

### 2 = Material

P – PVC  
 CP – CPVC  
 PP – Polypro  
 K – PVDF

### 3 = Spring

0 – 10 – 150 ps  
 1 – 0 – 50 psi

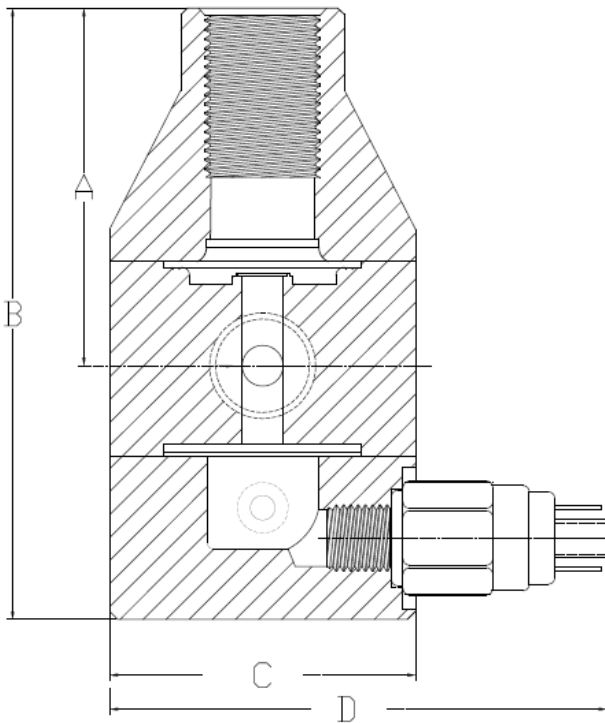
### 4 = Options

Blank – NPT & Std. Diaphragm  
 V – Viton Diaphragm  
 TV – PTFE/Viton Diaphragm  
 S – Socket Connection  
 U – Union Connection

### 5 = Switch Options

0 – Standard Body, 15 – 60 psi Switch  
 1 – Standard Body, 40 – 150 psi Switch  
 2 – 316L SS Body, 15 – 60 psi Switch  
 3 – 316L SS Body, 40 – 150 psi Switch

## DIMENSIONS



DIMENSIONS: BPMS				
All Materials				
Size	A (in)	B (in)	C (in)	D (in)
1/4"	2.70	4.70	2.34	3.80
3/8"	2.70	4.70	2.34	3.80
1/2"	2.70	4.70	2.34	3.80