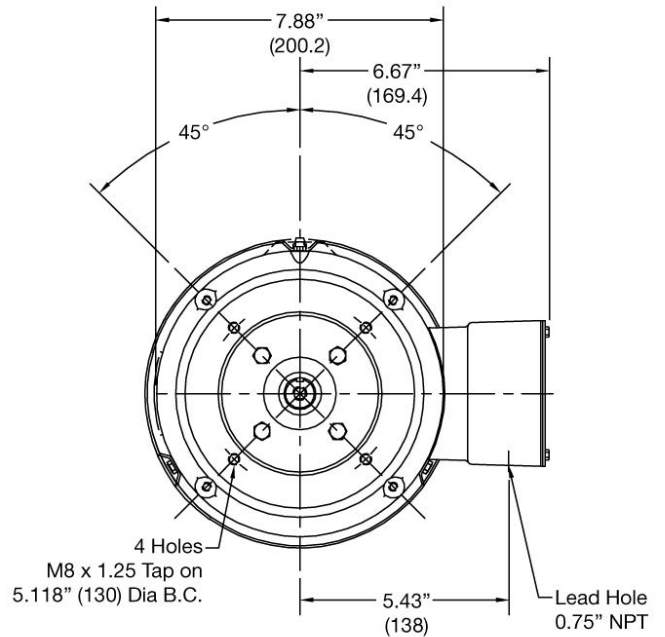
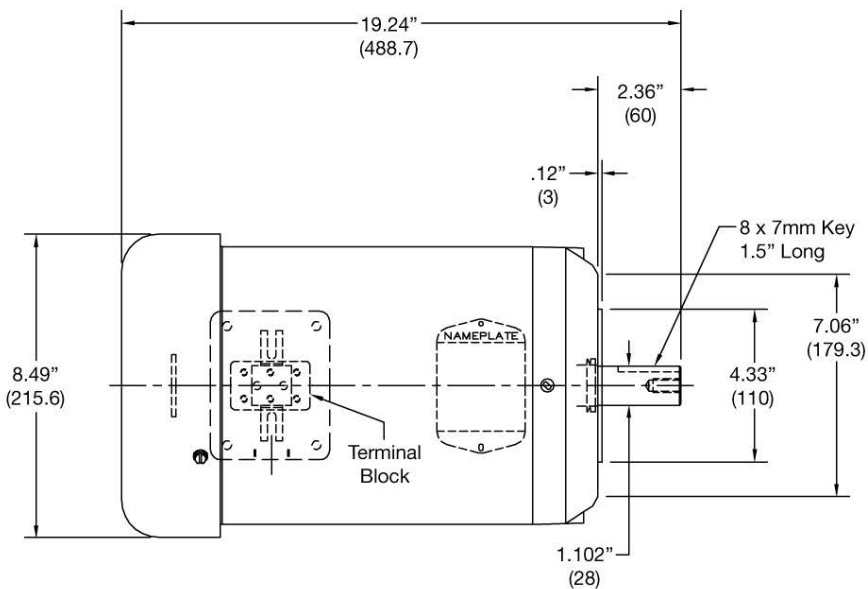




Technical Specifications

Enclosure:	TEFC / Stainless Steel (IP55)
Washdown:	Yes
Voltage:	190/380//230/460
Horsepower (KW):	1.5 (1.1)
Phase:	3
Amps:	8.4/4.2//8.8/4.4
Frequency:	50-60 Hz
Insulation Class:	H
Power Factor42
Frame:	D100C
RPM:	750-900
Noise Level:	70 dBa
Certification:	UL & CSA
Weight:	115 lbs (52,2 kg)



WARNING: Not suitable for pumping flammable or combustible liquids or use in a hazardous duty environment.

Note: Only compatible with the SP-700DD or 800DD Series pump.