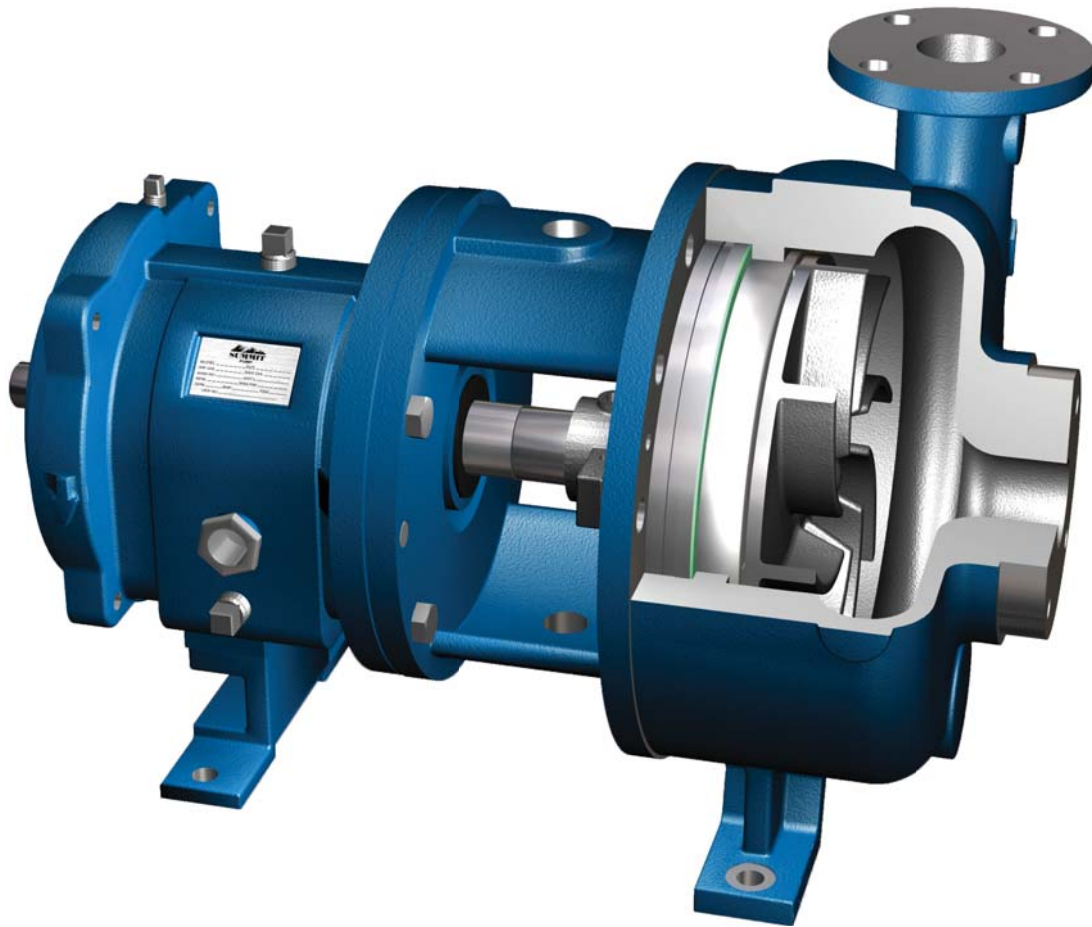


SUMMIT™

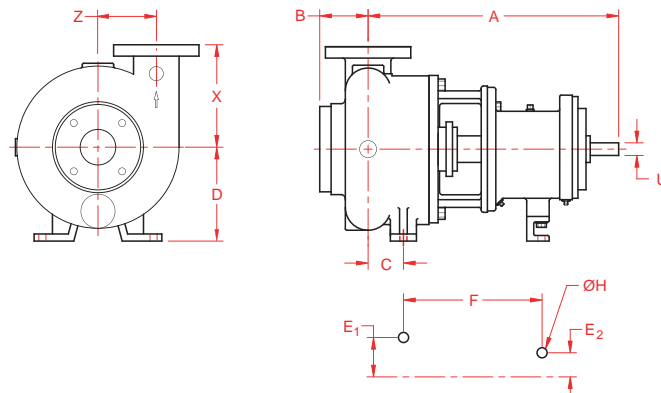
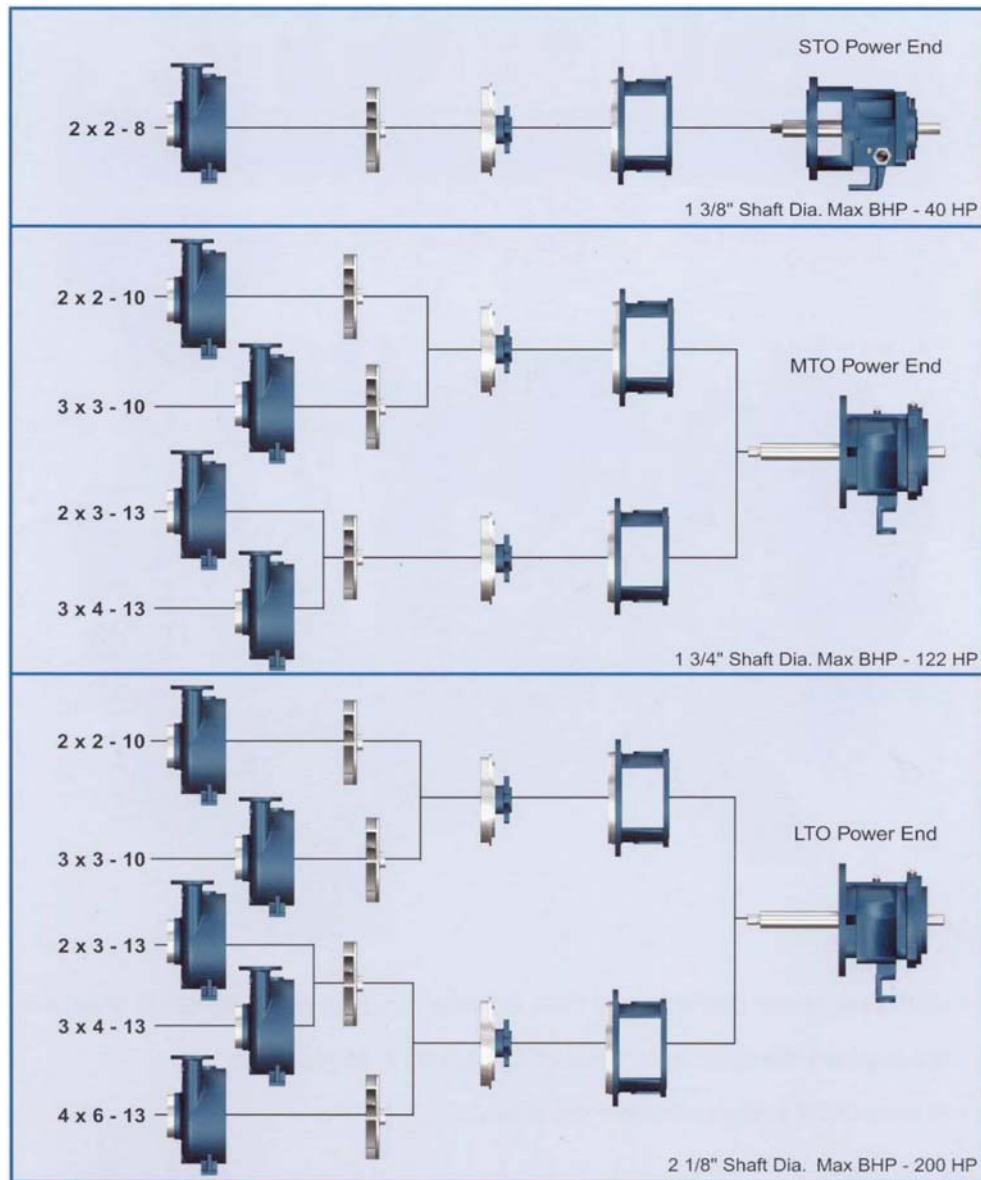
2196R



- Utilizes your Existing 2196 Power end and ANSI Bolt Pattern
- Handles Fibrous and Shear Sensitive Materials
- Minimizes Degradation of Solids



SUMMIT™
PUMP, Inc
www.SUMMITPUMP.com



Pump Dimensions

Pump Frame	Size	X	D	C	B	A	SP	Foot Pattern				Shaft	
								E1	E2	F	H	U	KEYWAY
STO	2x2-8	6 1/2	6	2 1/2	2 3/4	16	3 3/4	3 3/4	0	7 1/4	5/8	0.875	3/16 x 3/32
MTO or LTO	2x2-10	8 1/2	8 1/4	2 1/4	3 1/2	21 3/4		4 7/8	3 5/8	12 1/2		1.125	1/4 x 1/8
	3x3-10	9	8 1/4	2 15/16	4 1/4	22 1/2							
	2x3-13	10 1/2	10	2 13/16	4 1/8	22 5/16							
LTO	4x6-13	11 1/2	10	3 5/16	4 3/4	23 1/8		1.875	1/2 x 1/4				