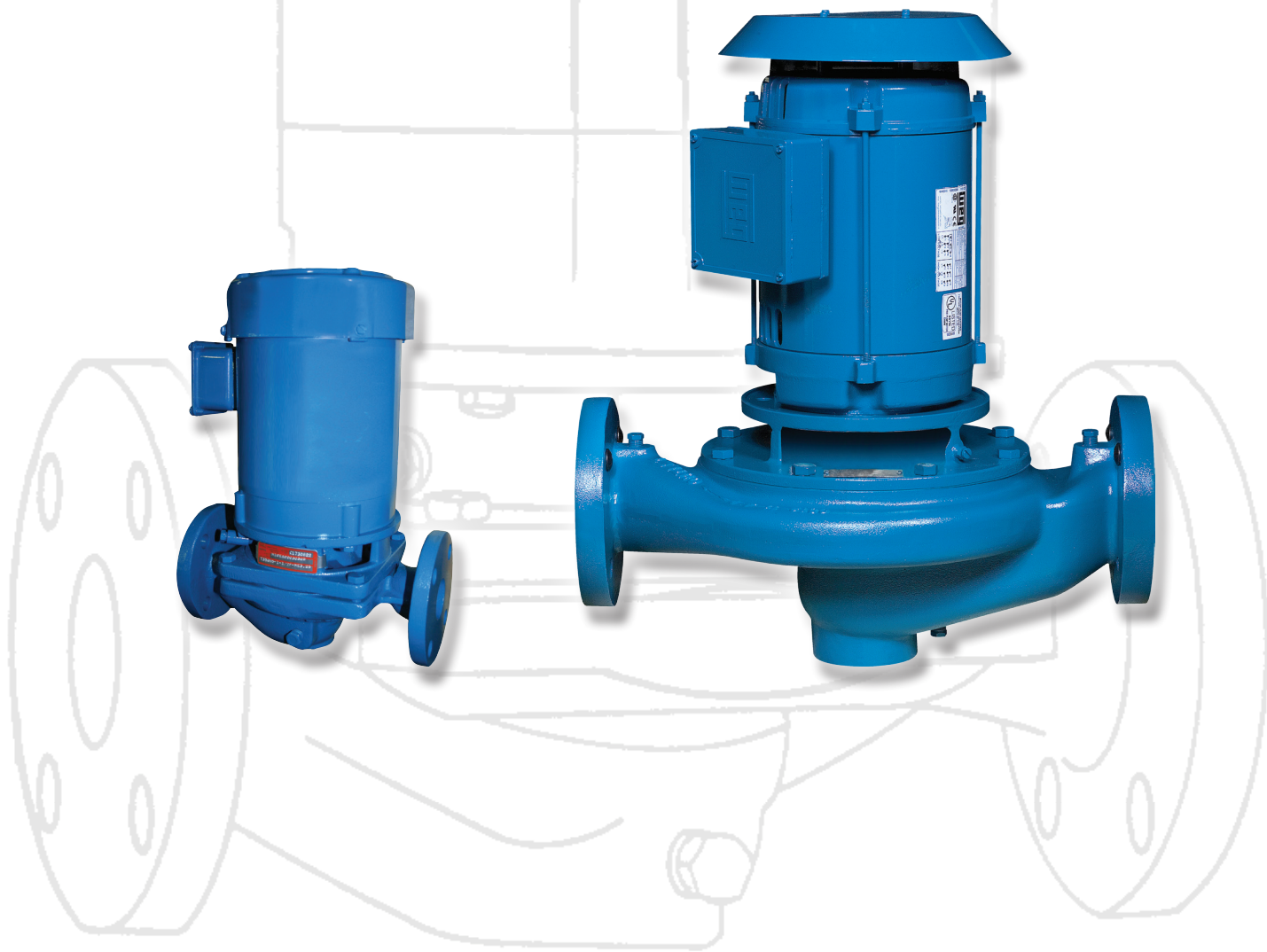


Vertical Inline Solutions

brands you trust.

Product Overview



burks[®]

WEINMAN[®]

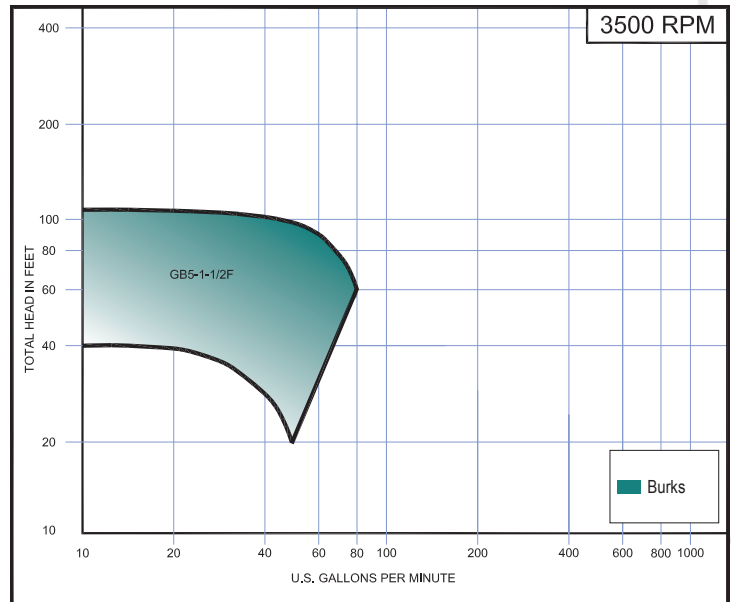
Vertical Inline Solutions

Crane Pumps & Systems offers two series of inline centrifugal pumps, Weinman CV series and Burks GB series. Weinman and Burks brands have been providing reliable solutions for over 100 years. The inline CV and GB series eliminate the need for costly foundations and guarantees minimum space requirements.

Burks Vertical Inline Pump

Model	GB Series
Flow Capacity	80 gpm
Heads to:	110'
Discharge Sizes	1.5"
HP	.33 - 2
RPM	3500

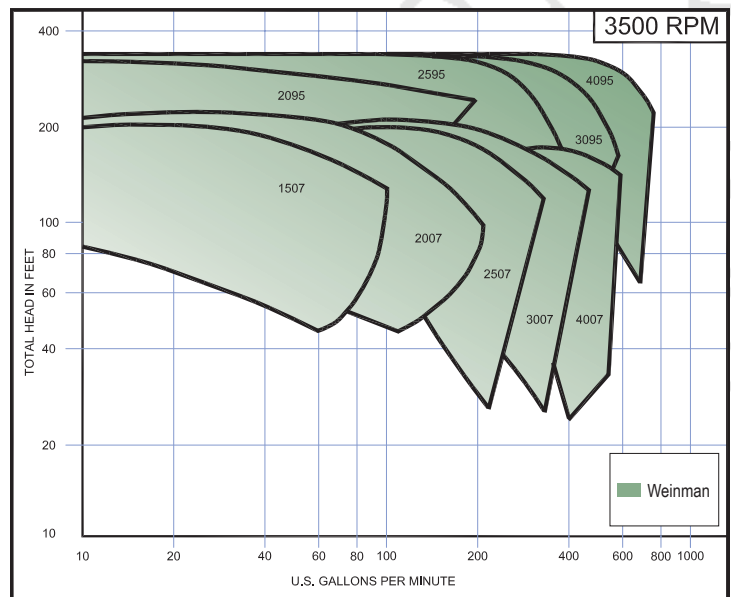
For lower volume applications requiring flows up to 80 GPM the Burks GB Series offers a flexible, cost savings solution. Burks GB pumps can be installed in any position; horizontal, vertical or on an angle. Leak proof, self-adjusting mechanical seals and all iron or all bronze construction provide reliable, quality construction. Inline design allows removal of pumping assembly without disturbing piping for easy maintenance. Standard pump motors have open drip proof construction, are rated with jet pump service factors for continuous duty operation, and come with NEMA standard mounting flange.



Weinman Vertical Inline Pumps

Model	CV Series
Flow Capacity	700 gpm
Heads to:	310'
Discharge Sizes	1.5" - 4"
HP	.50 - 60
RPM	3500 or 1750

For high volume applications requiring flows up to 700 GPM the Weinman 320 Series offers a long life solution. Suction and discharge nozzles are located 180° apart on the same centerline for mounting directly in a pipe line. This eliminates critical pipe alignment for ease of assembly and minimum pipe strain. Leak proof, self-adjusting mechanical seals and bronze wear ring(s) are supplied as standard on certain pumps. A built in purge system assures proper flushing and venting of seals. Motors are standard NEMA J and JM frame, enclosure as specified by customer.



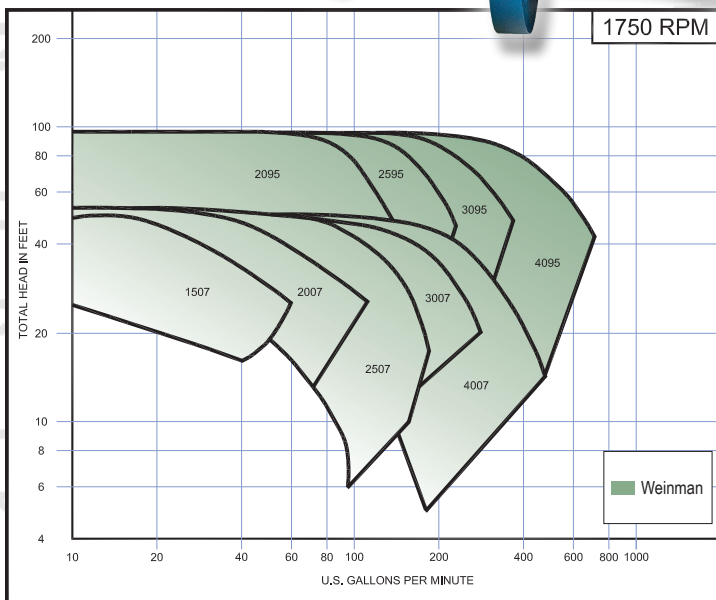
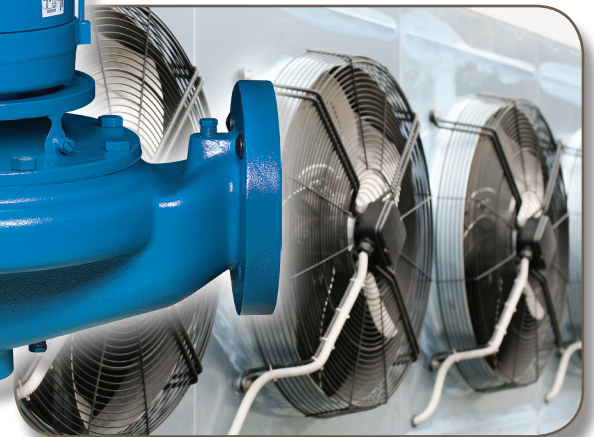
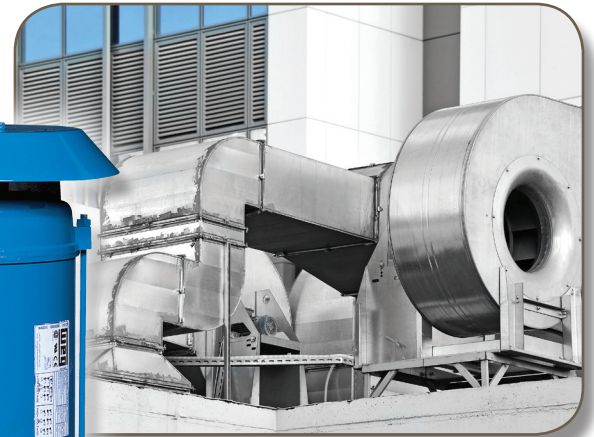
Vertical inline pumps are used in commercial, industrial, residential and municipal applications that require a centrifugal vertical inline mounting.

**Applications:
3500rpm**

- Heating
- Air Conditioning
- Water Sourced Heat Pump
- Snowmelt
- Pressure Boosting
- Liquid Transfer
- General Industrial Service

**Applications:
1750rpm**

- Circulation Pump for Boiler and Chiller Loops





A Crane Co. Company

PUMPS & SYSTEMS

Crane Pumps & Systems
420 Third Street
Piqua, Ohio 45356
(937) 778-8947
Fax (937) 773-7157
www.cranepumps.com

Crane Pumps & Systems Canada
83 West Drive
Brampton, Ont. Canada L6T 2J6
(905) 457-6223
Fax (905) 457-2650

© 2015 Crane Pumps & Systems, Inc.
A Crane Co. Company
Printed in U.S.A.
VERTINLBRO - Rev. A (6/15)

brands you trust.

BARNES®

burks®

DEMING®

WEINMAN®



PROSSER®